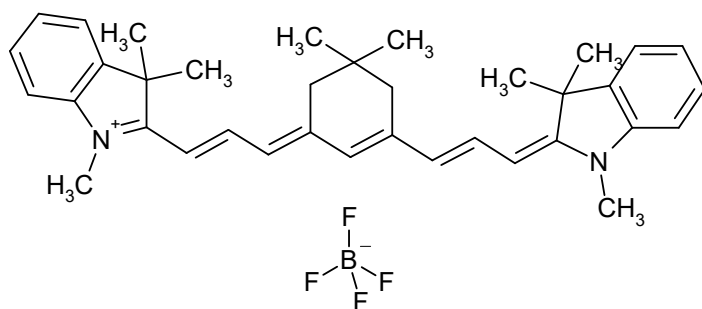


S1379

410536-44-6



Absorption

Methylene chloride

872 nm 379600 M⁻¹ cm⁻¹

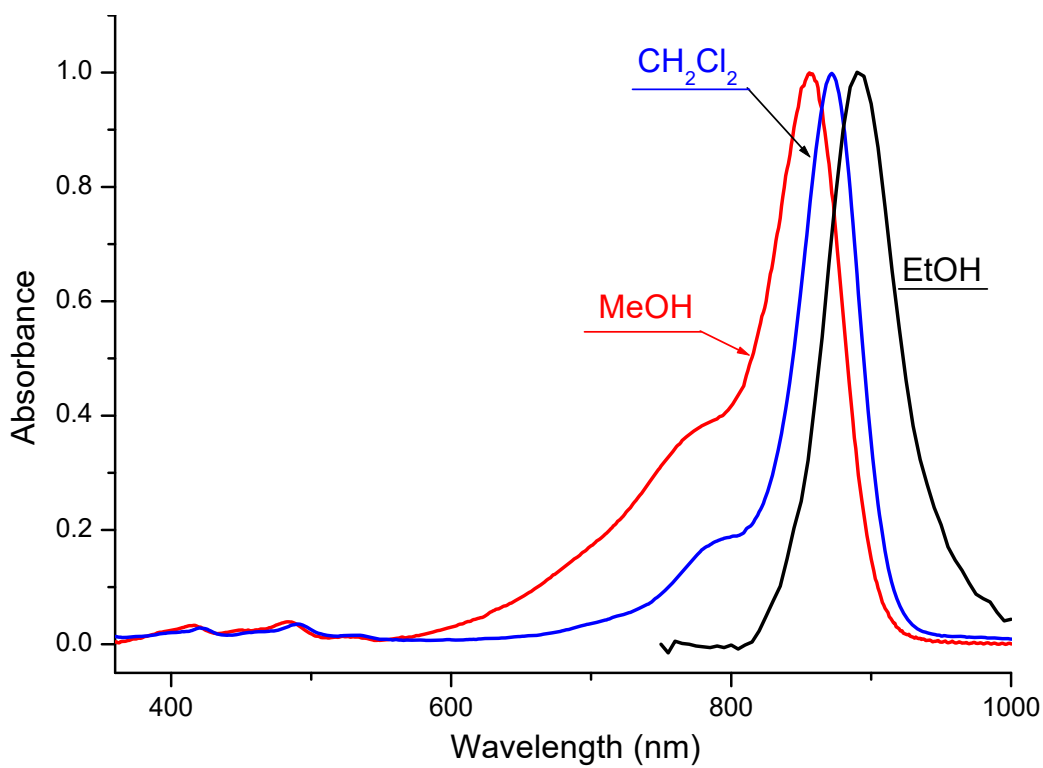
Emission

Ethanol

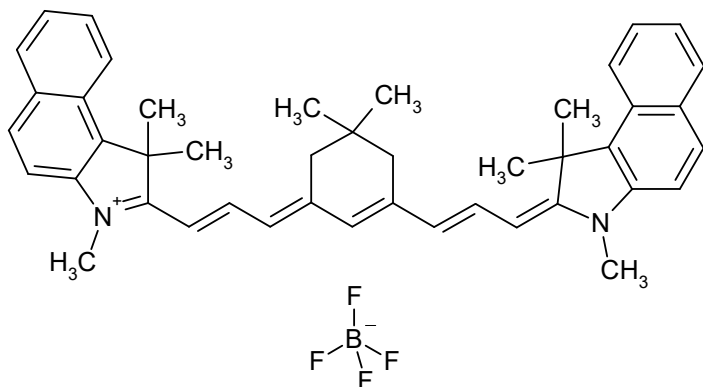
891 nm

C₃₆H₄₃BF₄N₂

590.5621



S1984



Absorption

Methylene chloride

912 nm 331000 M⁻¹ cm⁻¹

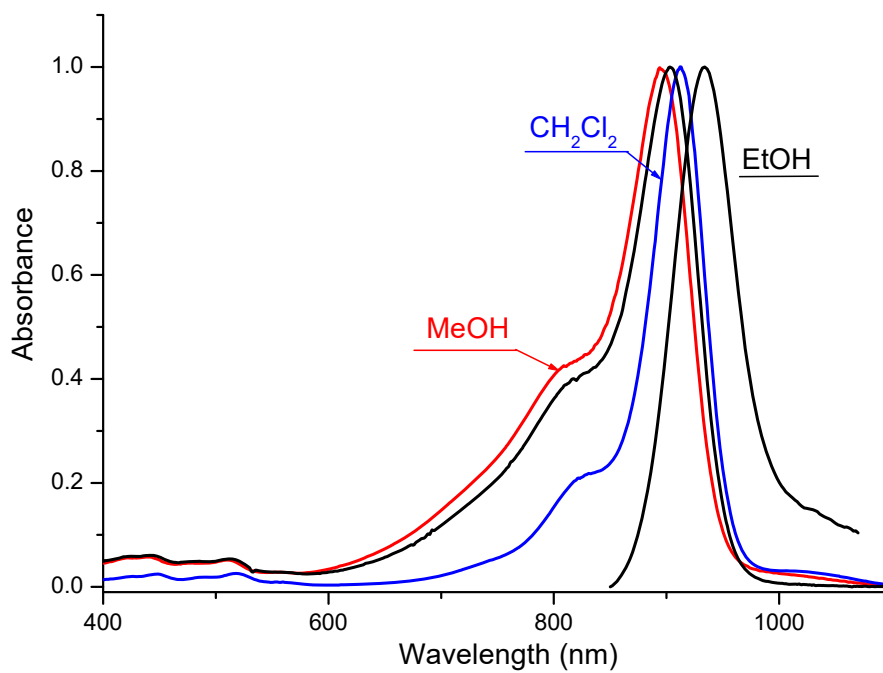
Emission

Ethanol

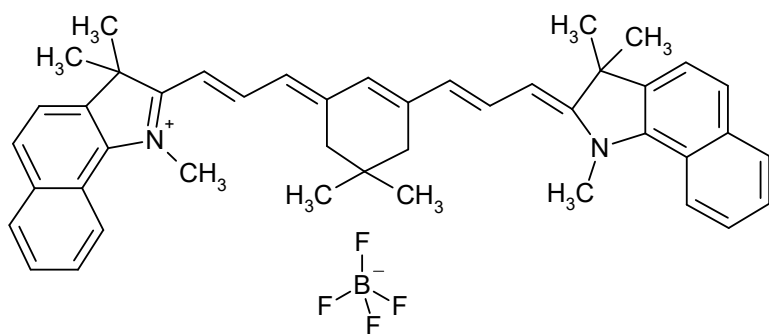
935 nm

C₄₄H₄₇BF₄N₂

690.6832



S1985



Absorption

Methylene chloride

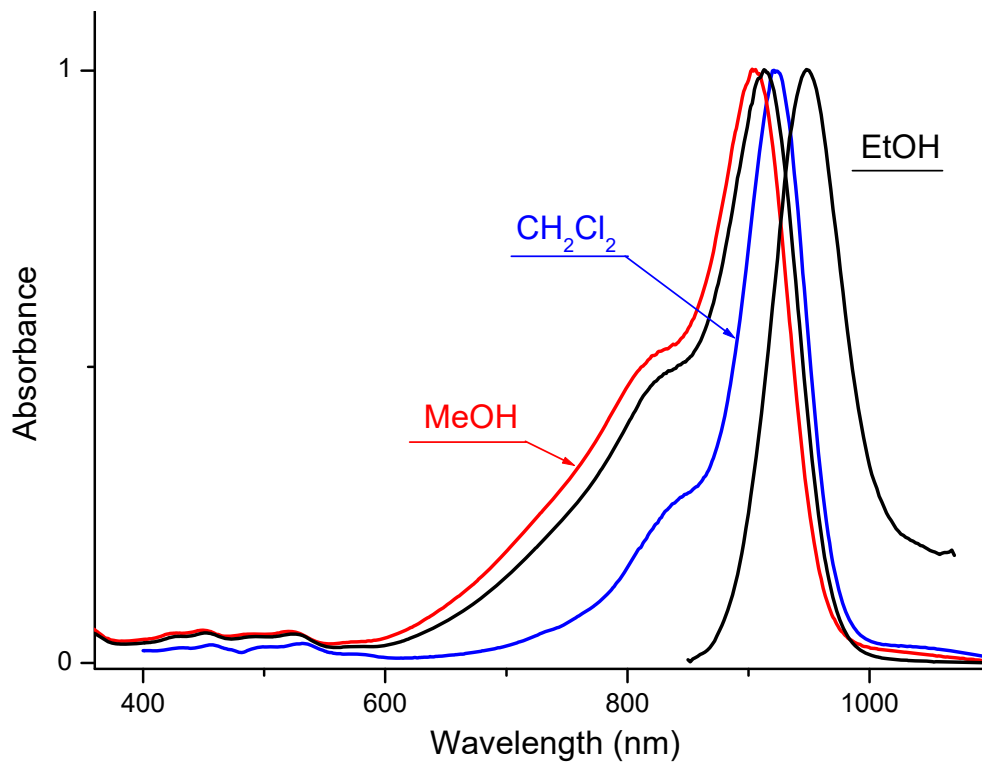
921 nm 327400 M⁻¹ cm⁻¹

Emission

948 nm

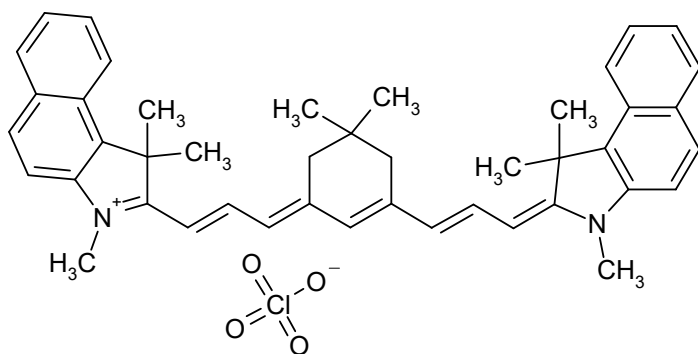
C₄₄H₄₇BF₄N₂

690.6832



S1178

185518-02-9



Absorption

Methylene chloride

912 nm 331000 M⁻¹ cm⁻¹

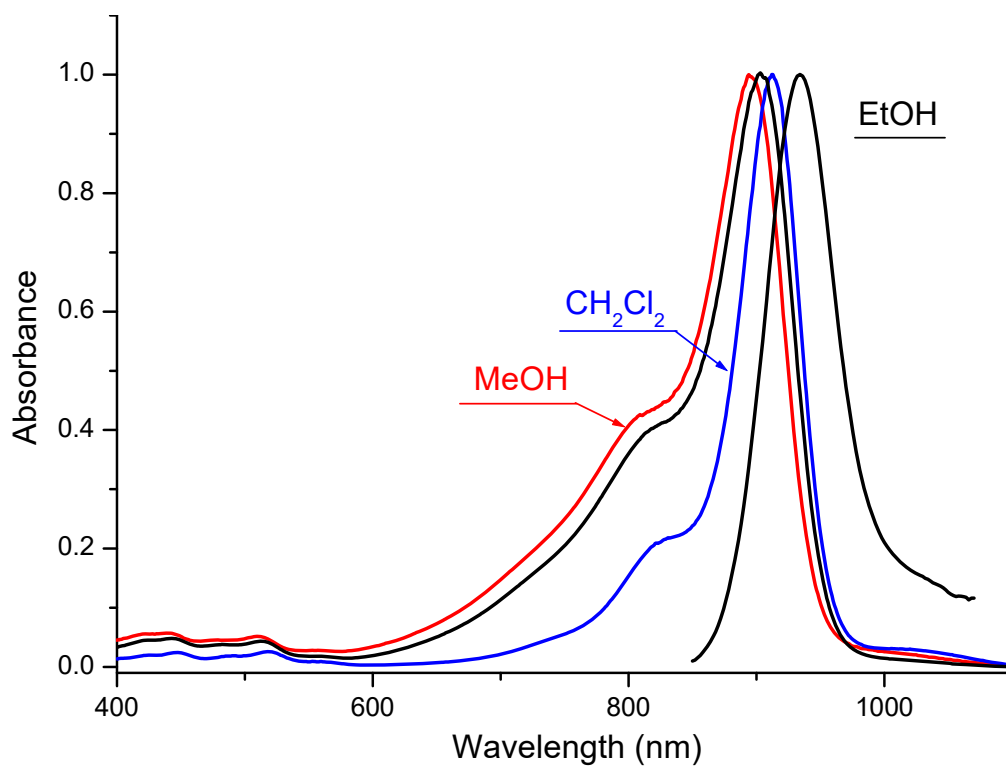
Emission

Ethanol

934 nm

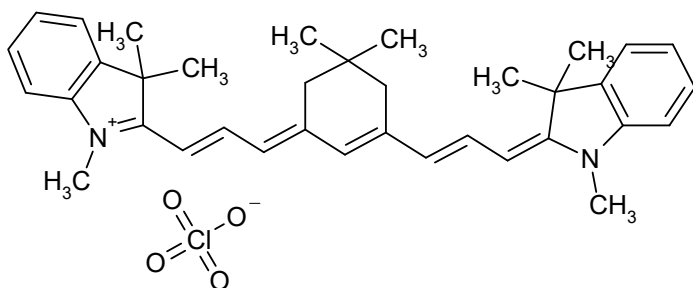
C₄₄H₄₇ClN₂O₄

703.3292



S1173

68339-63-9



Absorption

Methylene chloride

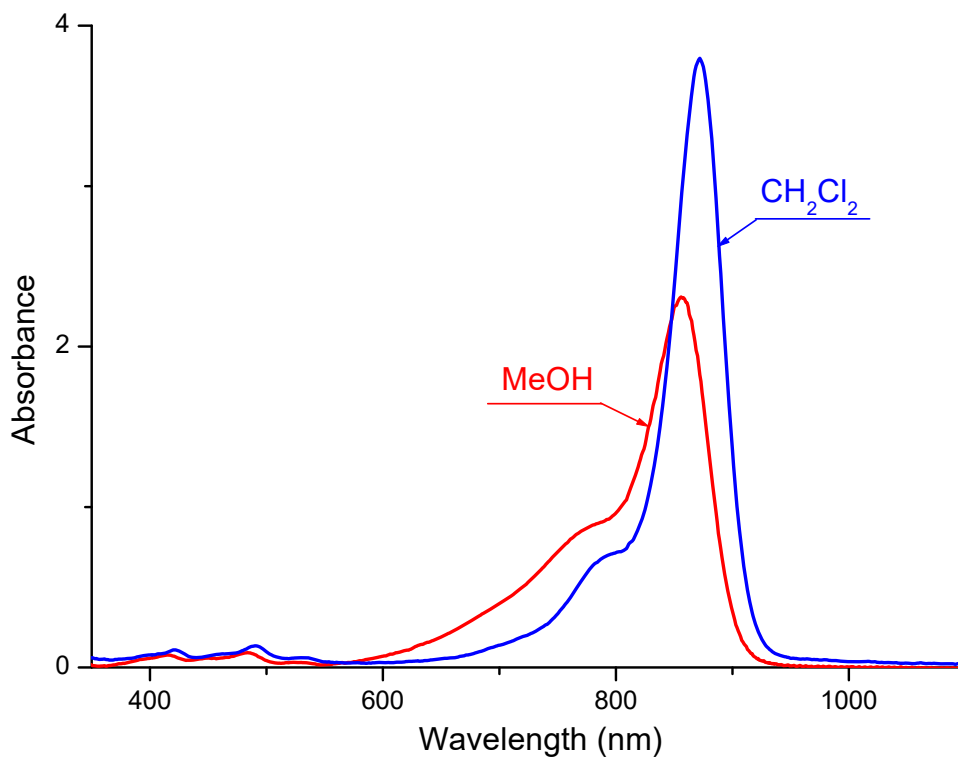
872 nm 379600 M-1 cm-1

Emission

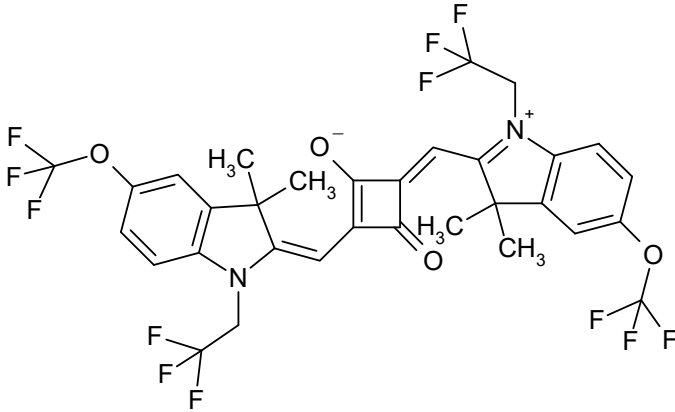
nm

C₃₆H₄₃ClN₂O₄

603.2081



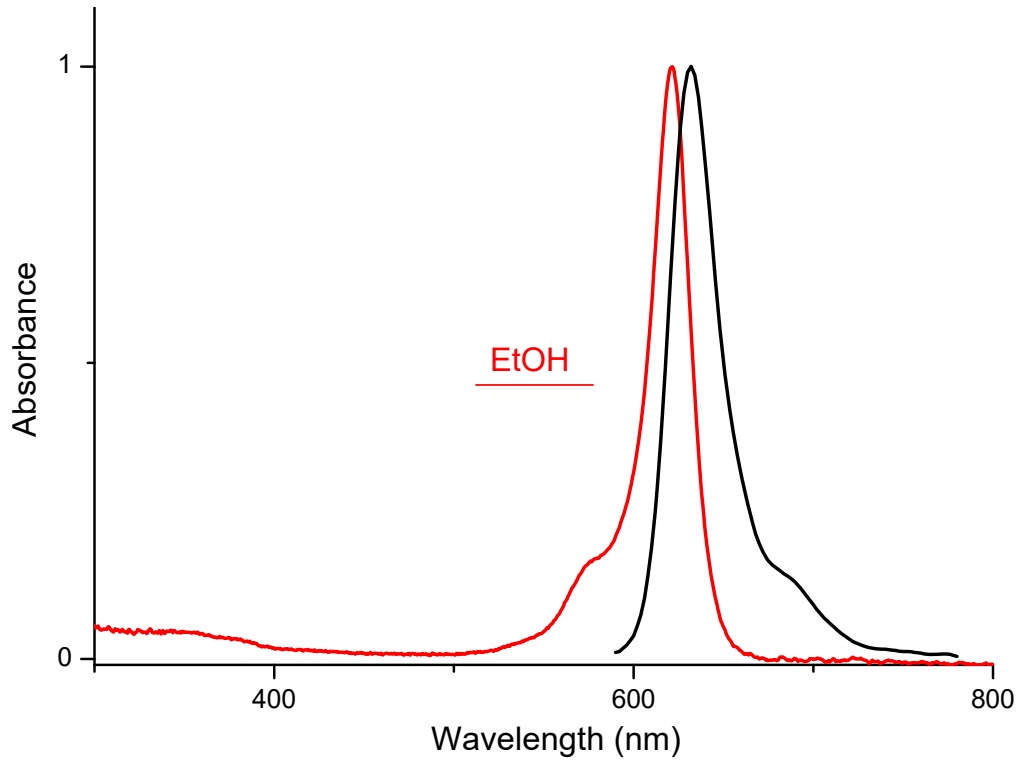
S2091



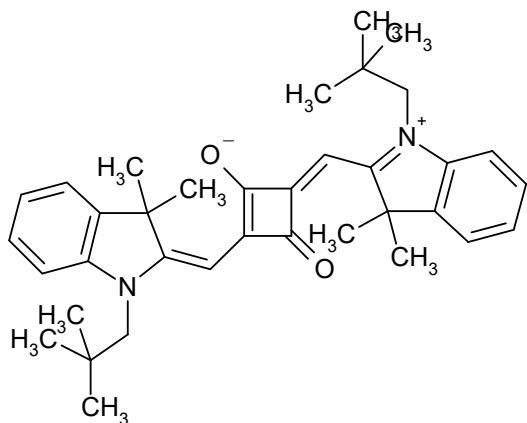
<i>Absorption</i>	Ethanol
622 nm	273700 M ⁻¹ cm ⁻¹
<hr/>	
<i>Emission</i>	Ethanol
632 nm	

C₃₂H₂₄F₁₂N₂O₄

728.5399



S2090



Absorption

Ethanol

638 nm 293900 M⁻¹ cm⁻¹

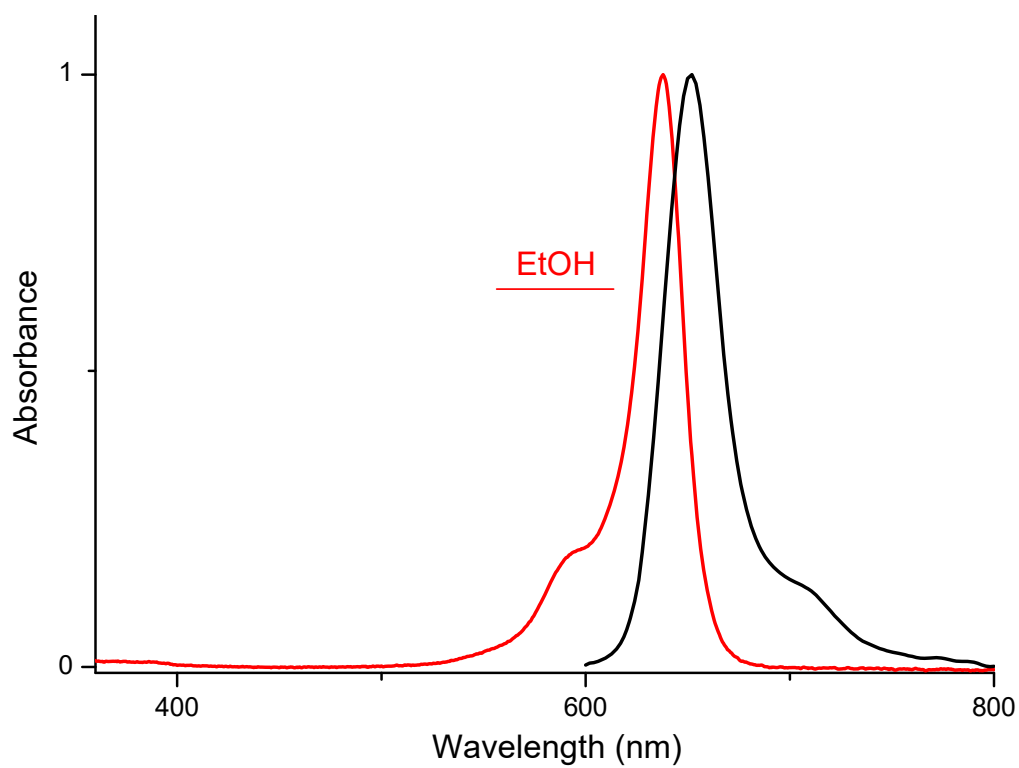
Emission

Ethanol

652 nm

C₃₆H₄₄N₂O₂

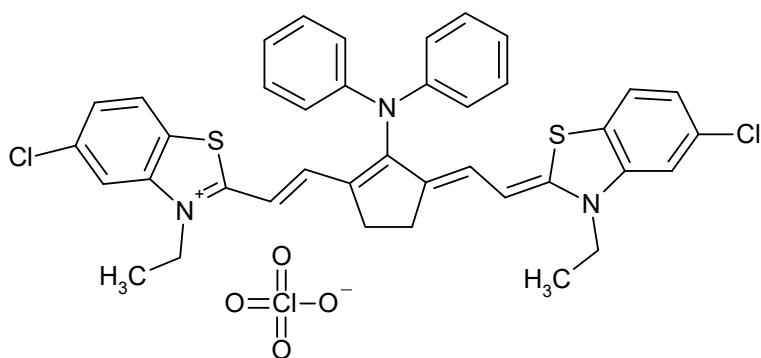
536.7643



S0218

53655-17-7

IR-140



Absorption

DMSO

823 nm 150000 M⁻¹ cm⁻¹

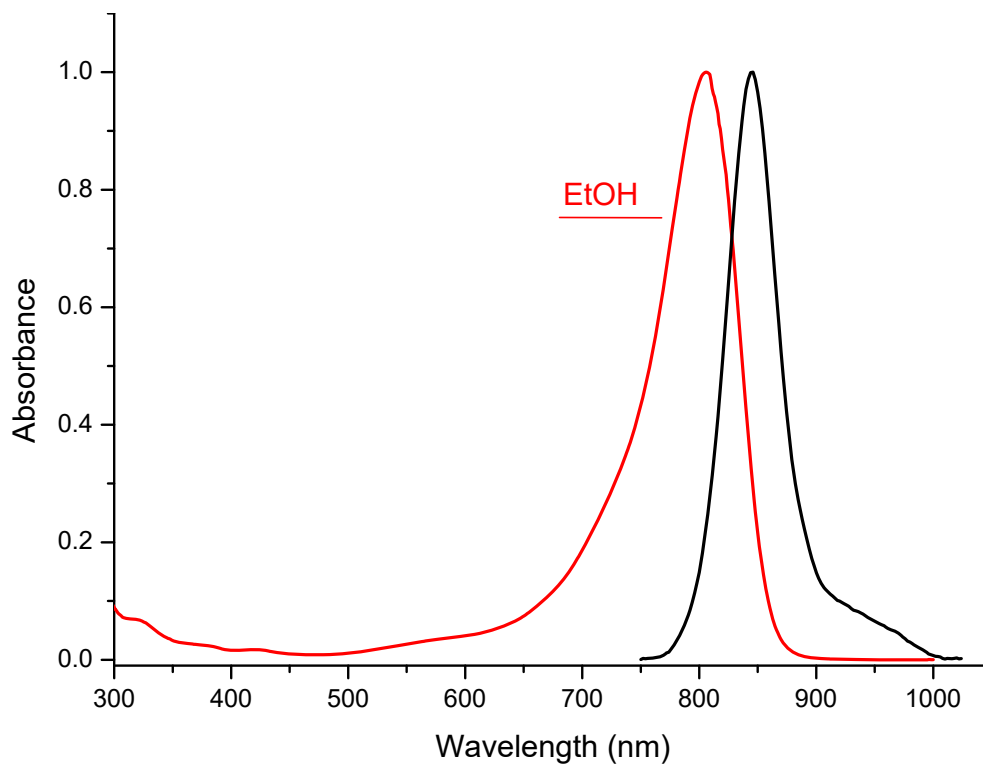
Emission

Ethanol

845 nm

C₃₉H₃₄Cl₃N₃O₄S₂

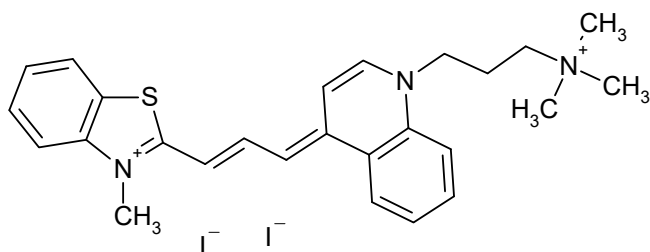
779.2105



S1494

157199-63-8

TO-PRO-3



Absorption

Methanol

636 nm 158000 M⁻¹ cm⁻¹

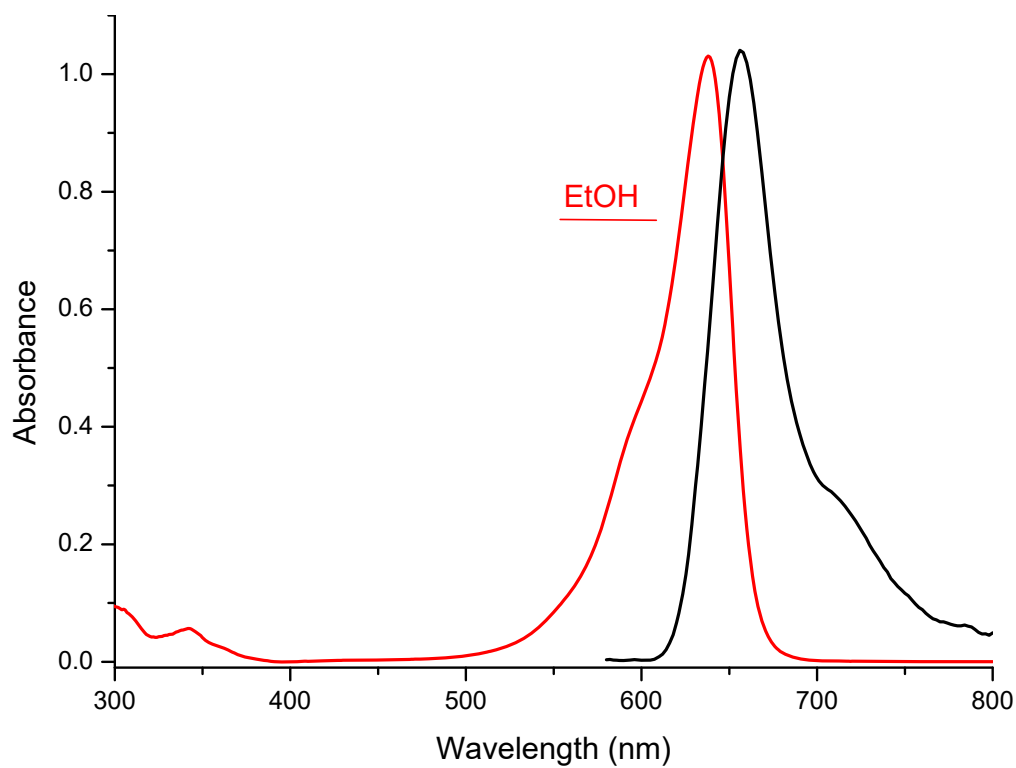
Emission

Ethanol

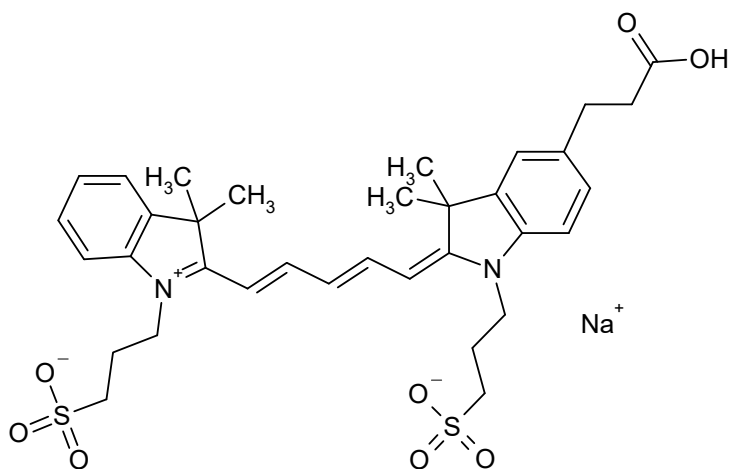
657 nm

C₂₆H₃₁I₂N₃S

671.4299



S3866



Absorption

Methanol

649 nm 204000 M⁻¹ cm⁻¹

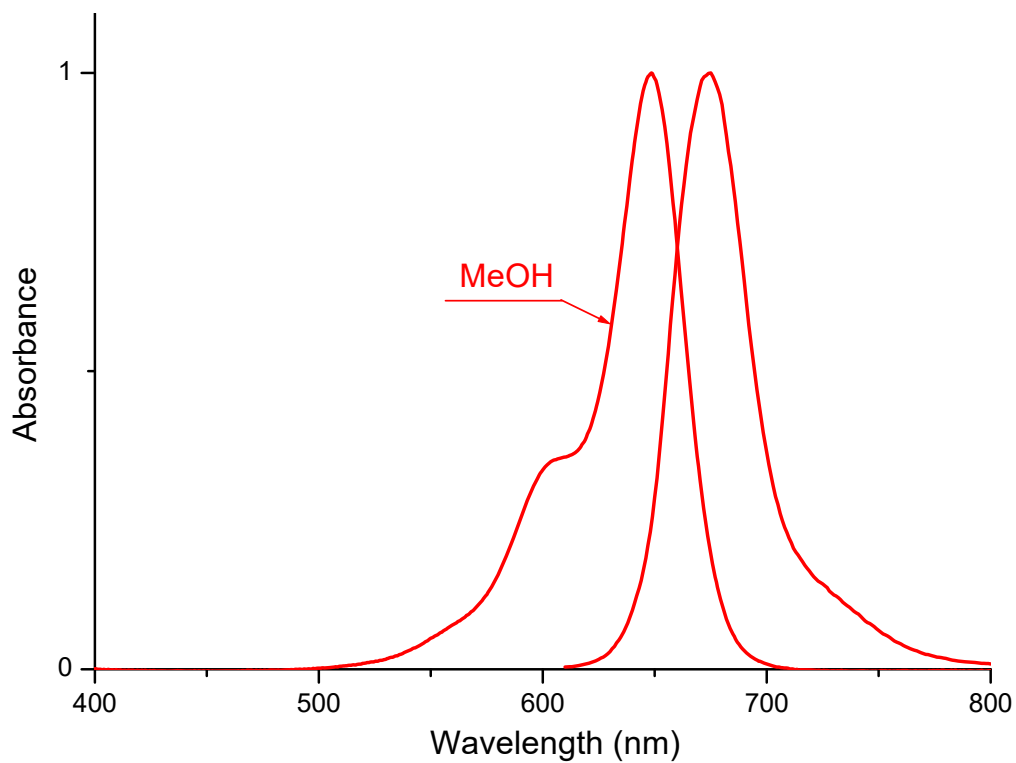
Emission

Methanol

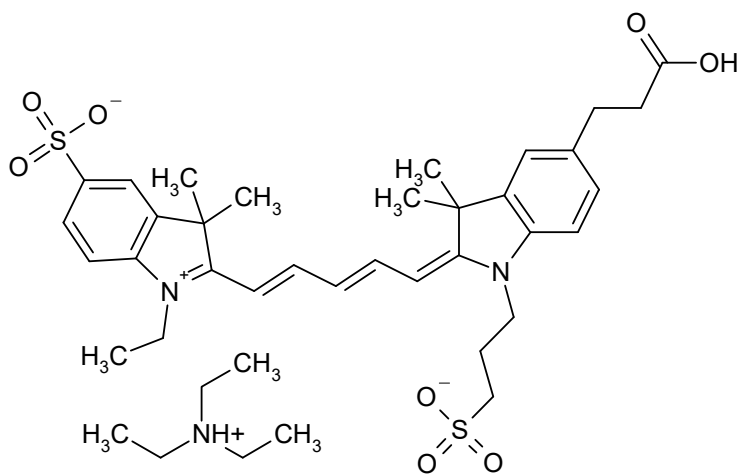
675 nm

C₃₄H₄₁N₂NaO₈S₂

692.8323



S3850



Absorption

Methanol

650 nm 205000 M⁻¹ cm⁻¹

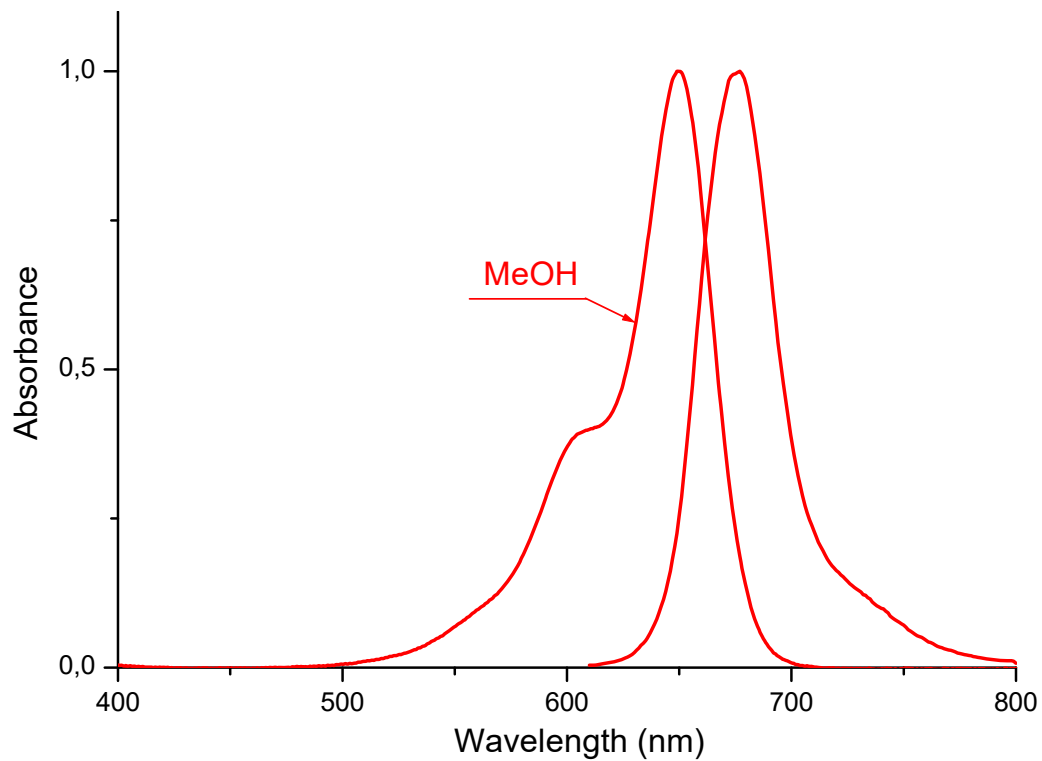
Emission

Methanol

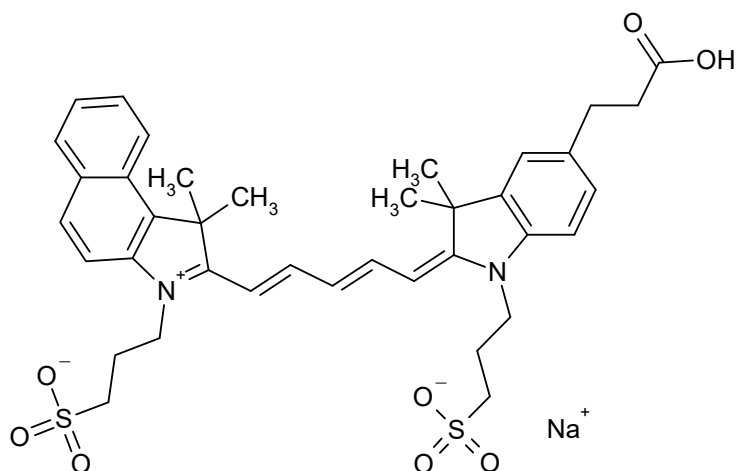
677 nm

C₄₀H₅₅N₂O₈S₂

756.0210



S3869



Absorption

Methanol

666 nm 218000 M⁻¹ cm⁻¹

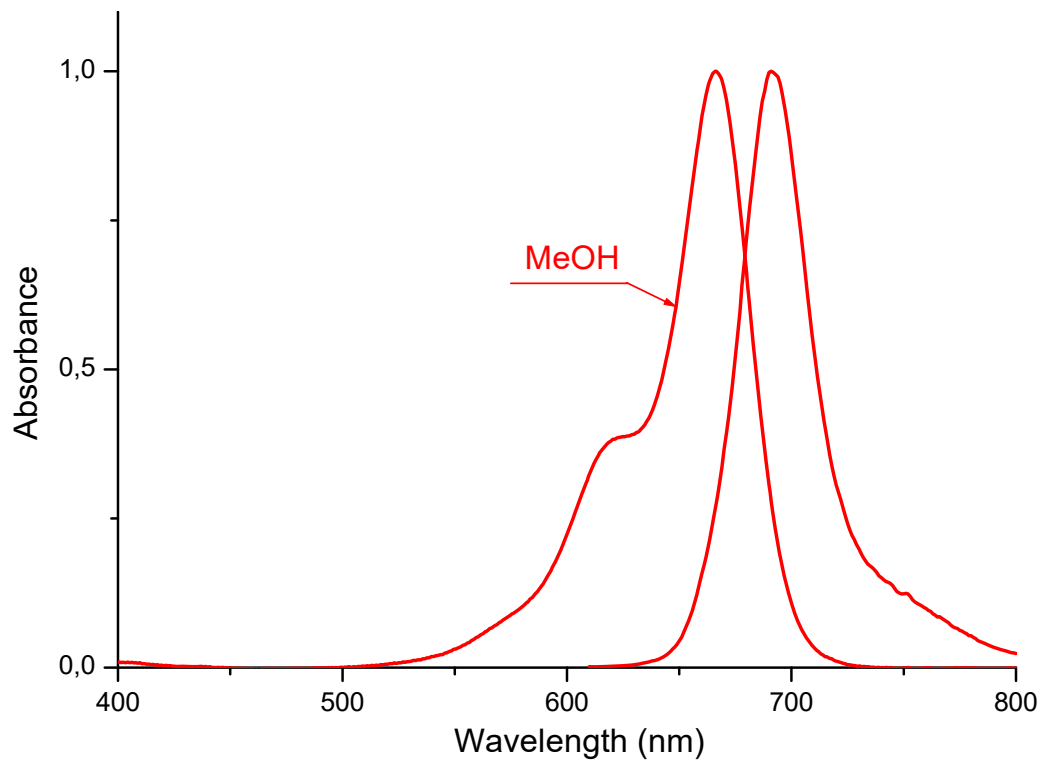
Emission

Methanol

691 nm

C₃₈H₄₃N₂NaO₈S₂

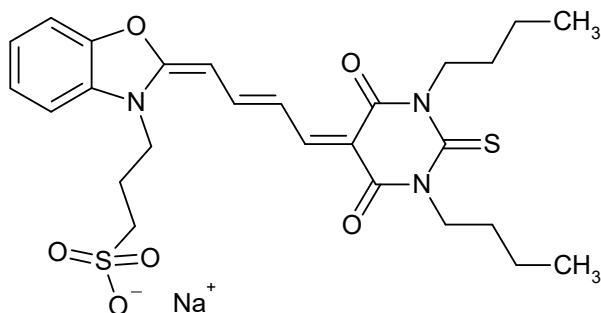
742.8928



S3038

62796-23-0

Merocyanine 540



Absorption

Methanol

560 nm 170000 M⁻¹ cm⁻¹

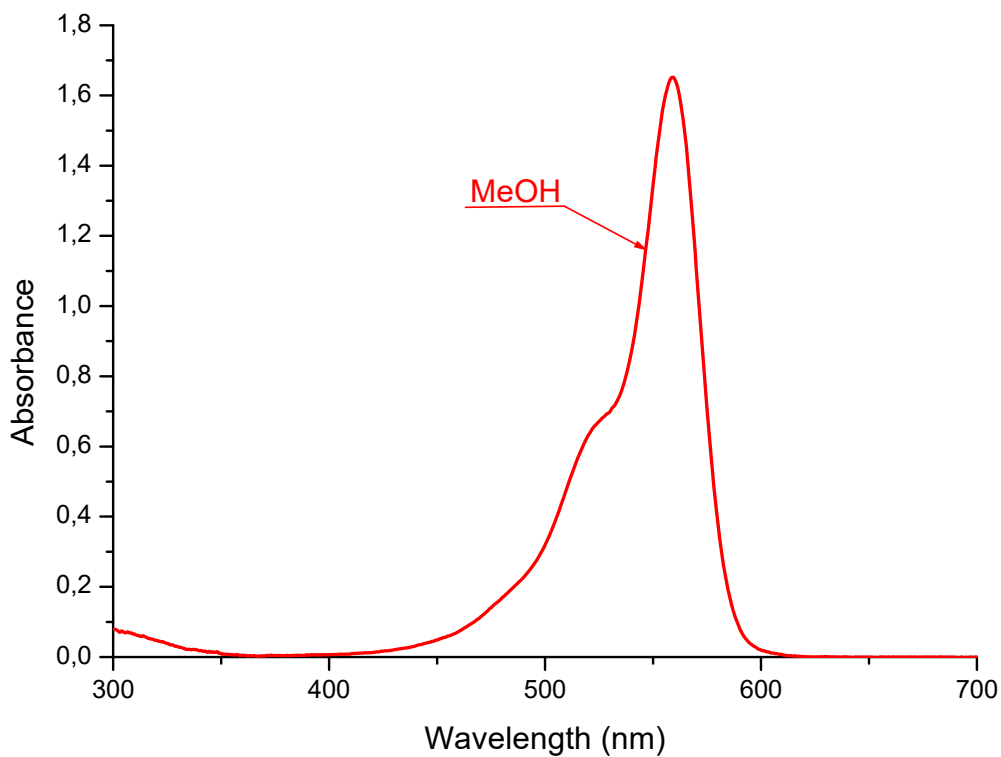
Emission

Methanol

578 nm

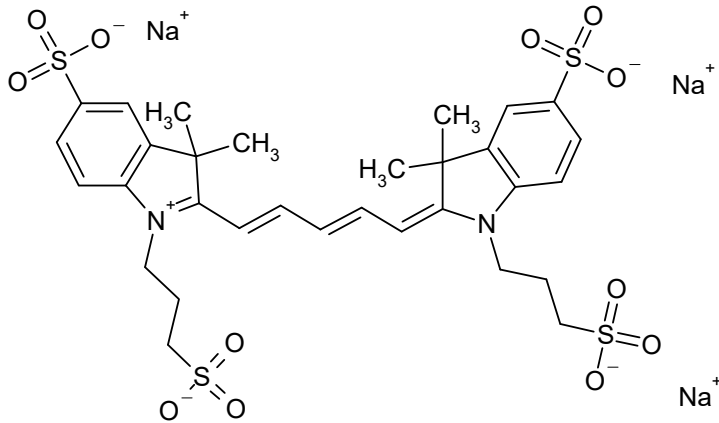
C₂₆H₃₂N₃NaO₆S₂

569.6792



S1404

190517-63-6



Absorption

Methanol

649 nm 230000 M-1 cm-1

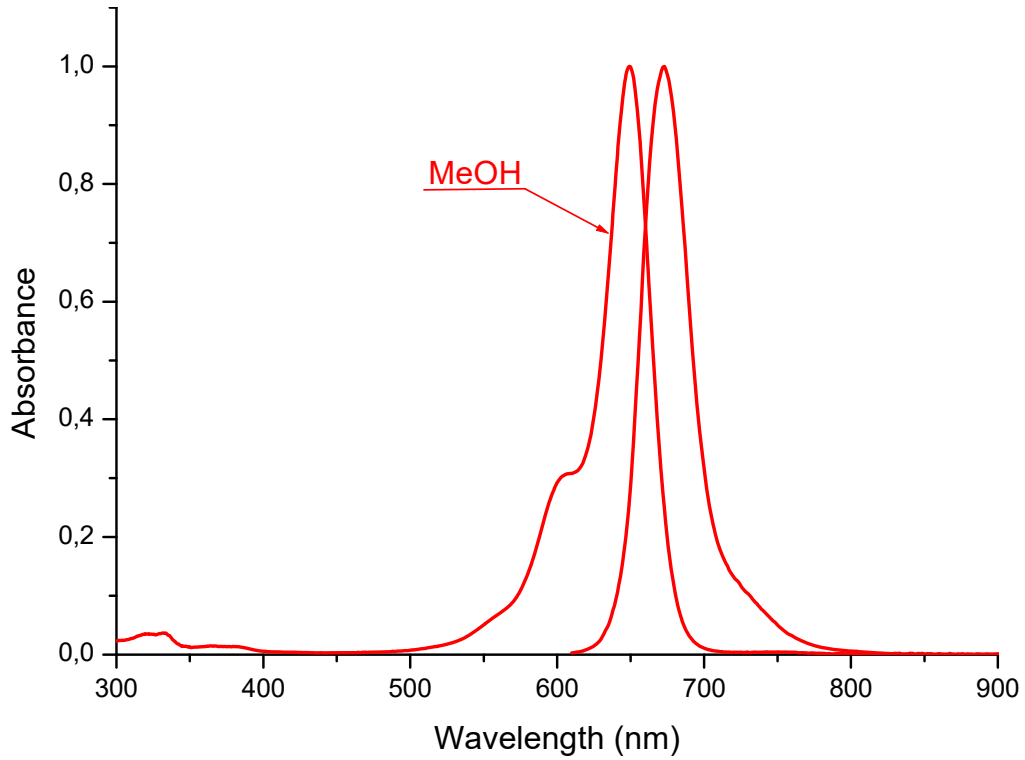
Emission

Methanol

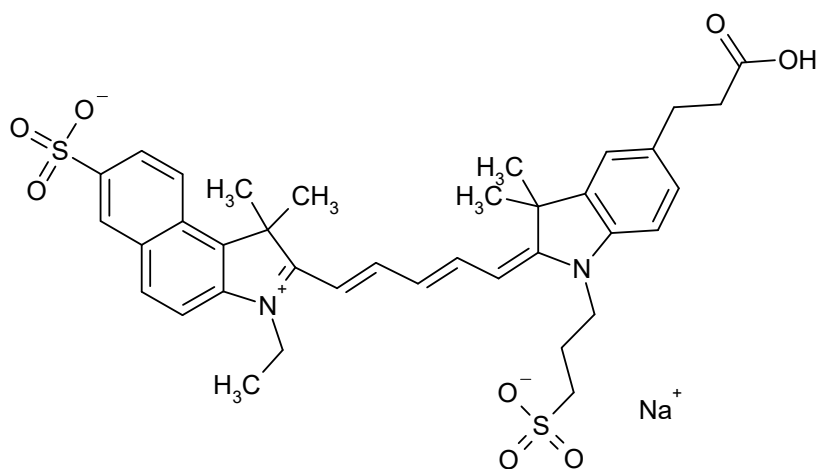
673 nm

$C_{31}H_{35}N_2Na_3O_{12}S_4$

824.8562



S3906



Absorption

Methanol

667 nm 230000 M⁻¹ cm⁻¹

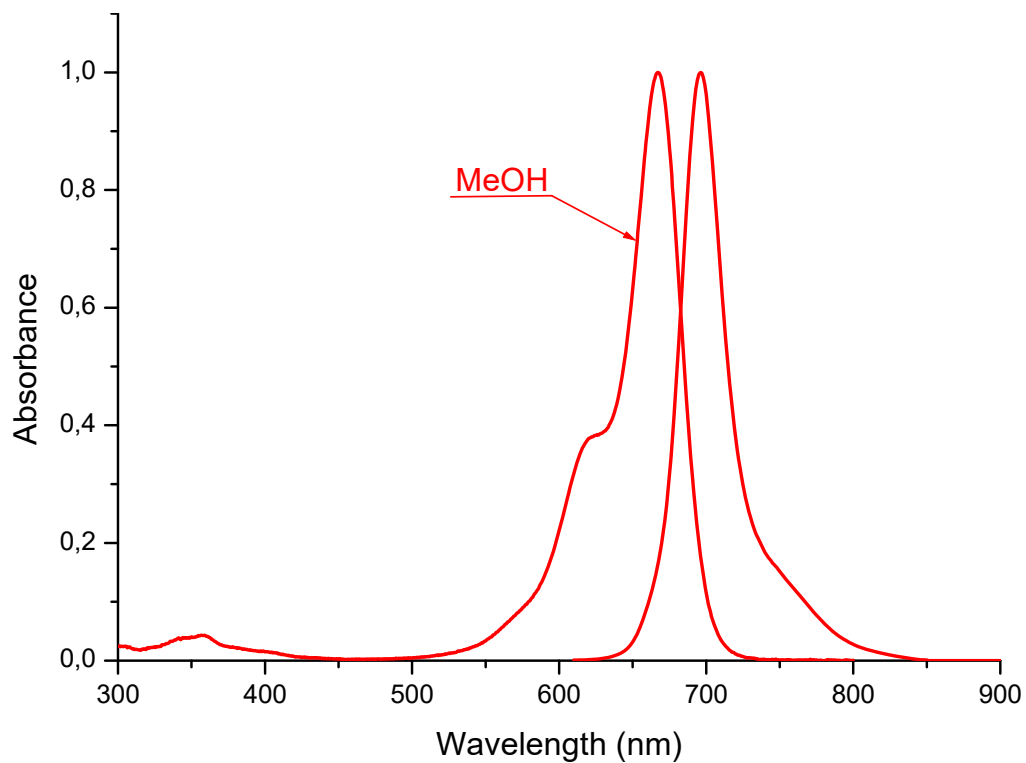
Emission

Methanol

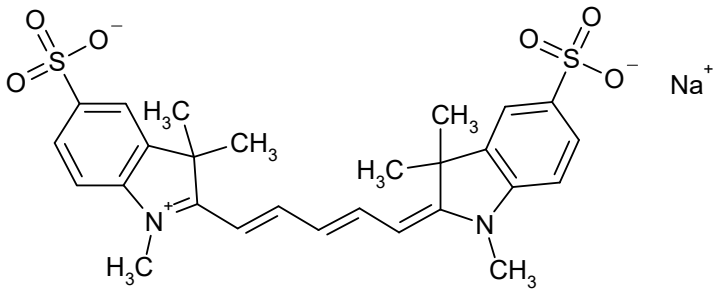
696 nm

C₃₇H₄₁N₂NaO₈S₂

728.8657



S1403



Absorption

Methanol

645 nm 237000 M⁻¹ cm⁻¹

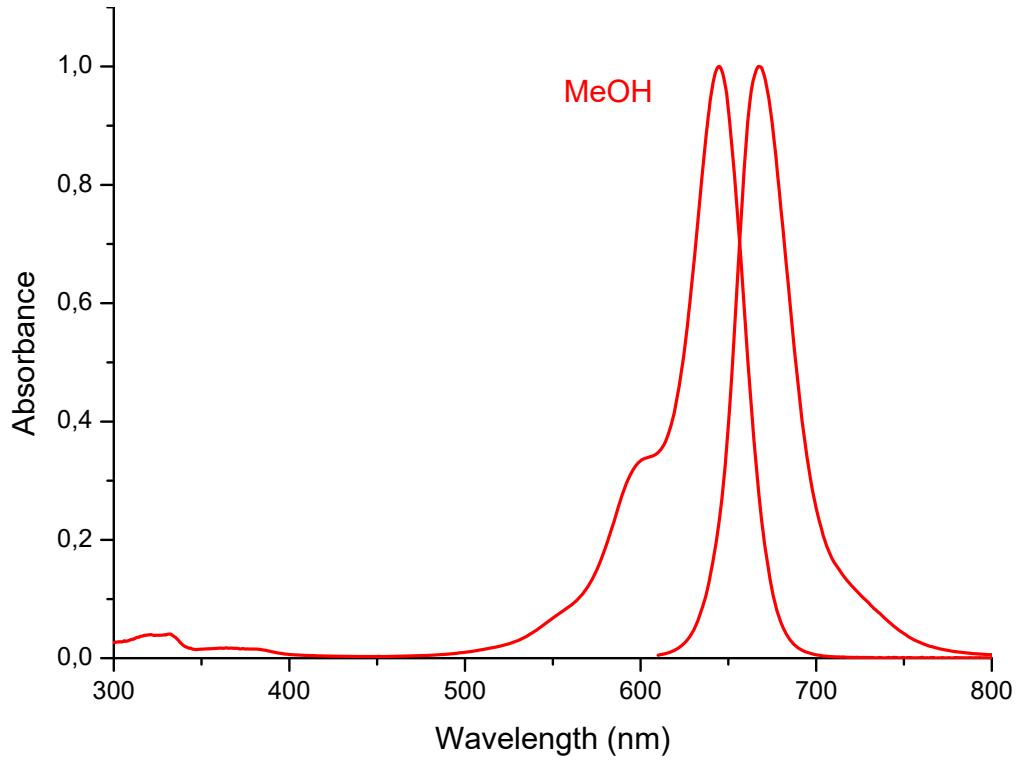
Emission

Methanol

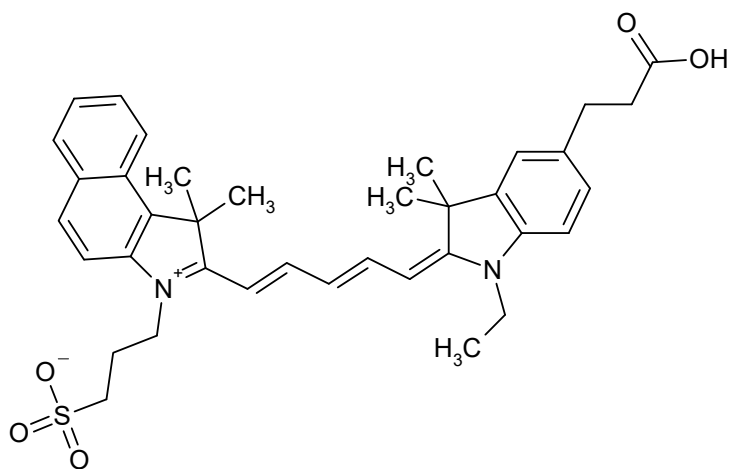
667 nm

C₂₇H₂₉N₂NaO₆S₂

564.6598



S3828



Absorption

Methanol

672 nm 186700 M⁻¹ cm⁻¹

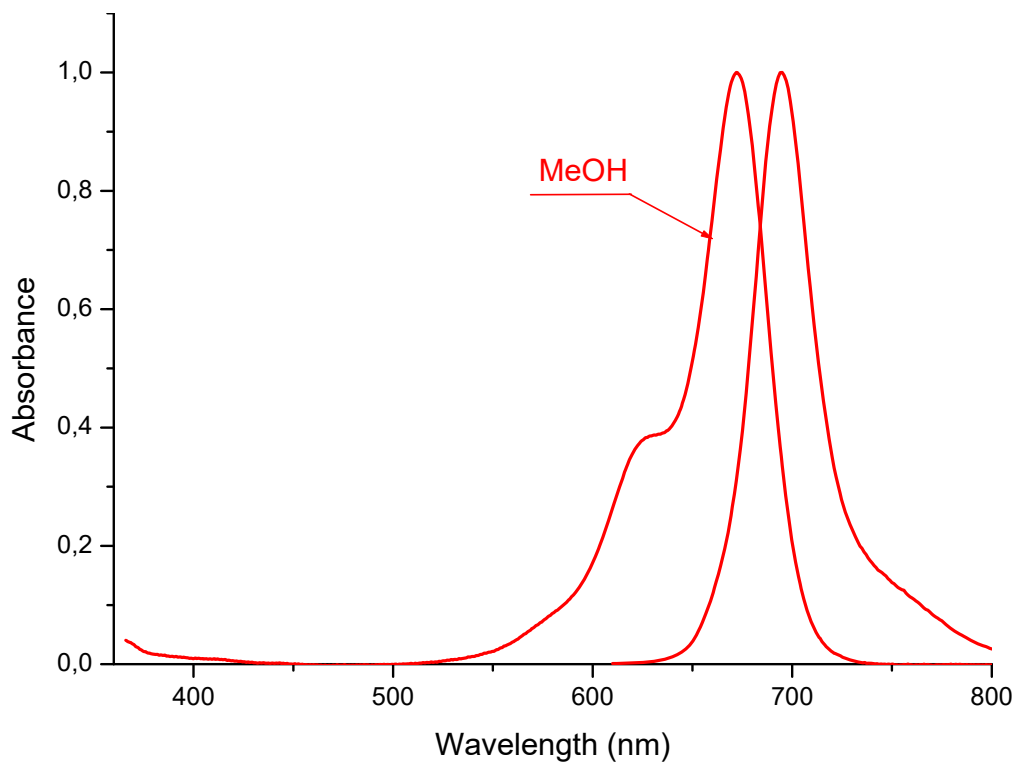
Emission

Methanol

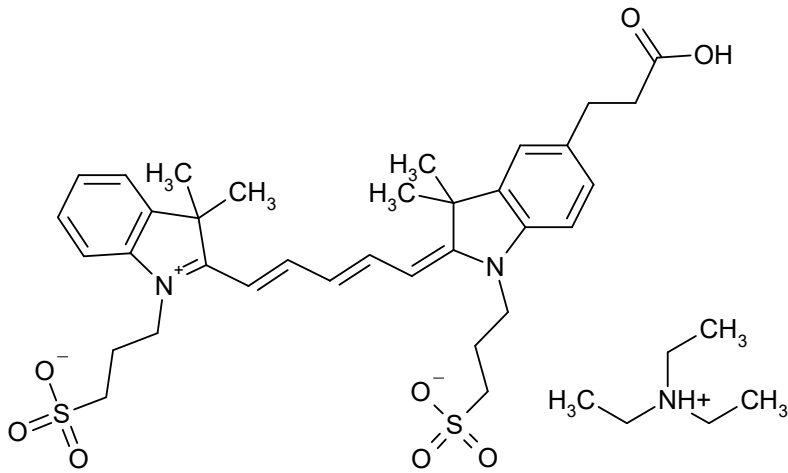
695 nm

C₃₇H₄₂N₂O₅S

626.8217



S3857



Absorption

Methanol

649 nm 216000 M⁻¹ cm⁻¹

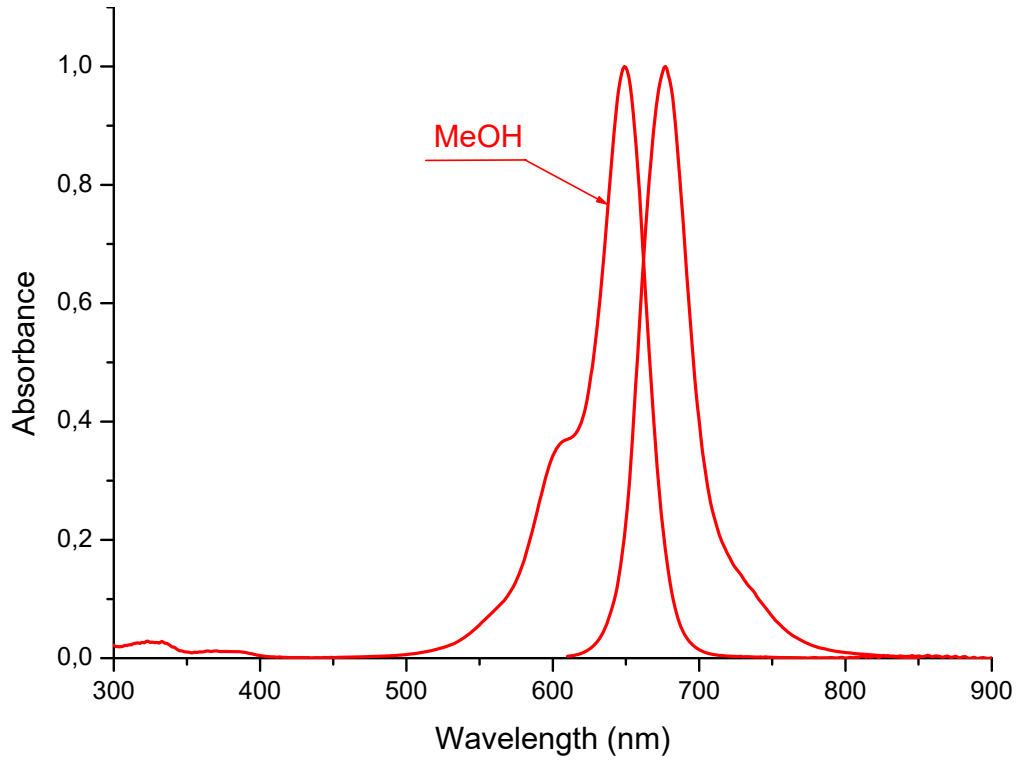
Emission

Methanol

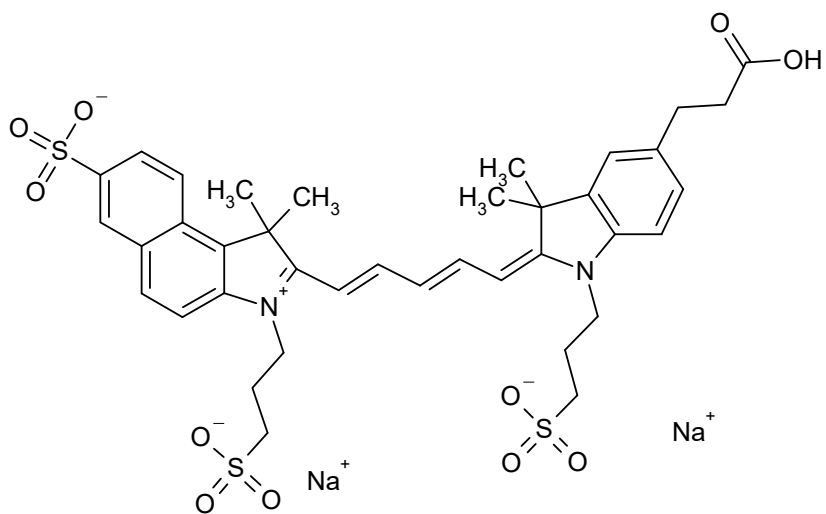
677 nm

C₄₁H₅₇N₂O₈S₂

770.0480



S3912



Absorption

Methanol

668 nm 220000 M-1 cm-1

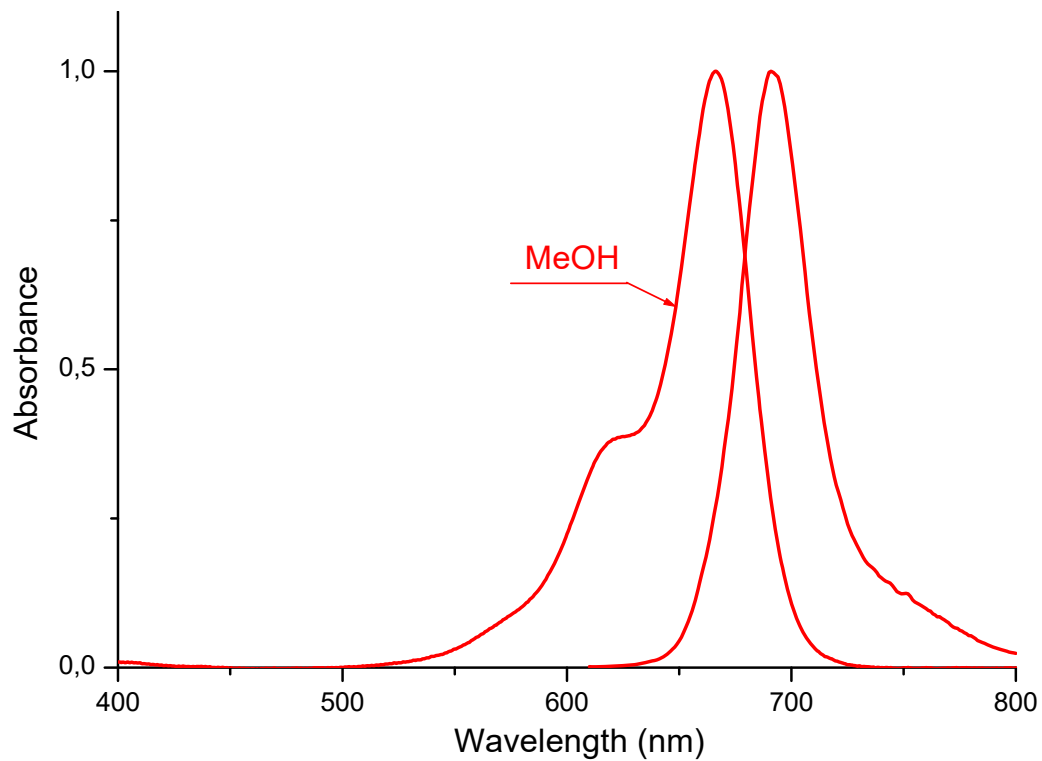
Emission

Methanol

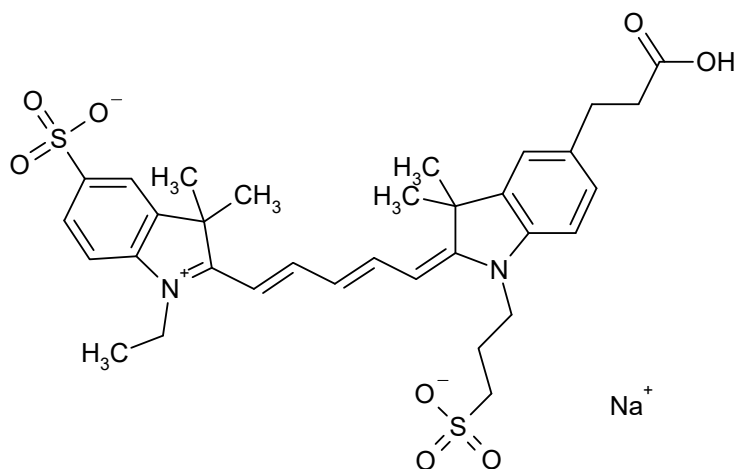
695 nm

$C_{38}H_{42}N_2Na_2O_{11}S_3$

844.9368



S3950



Absorption

Methanol

650 nm 223500 M⁻¹ cm⁻¹

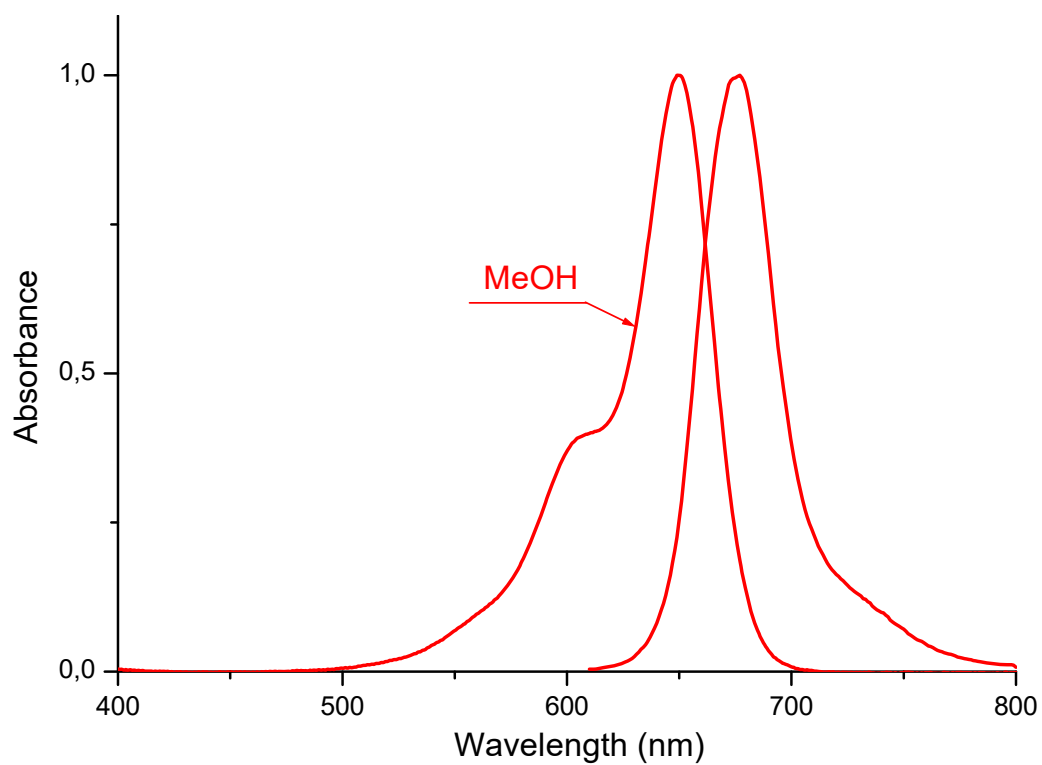
Emission

Methanol

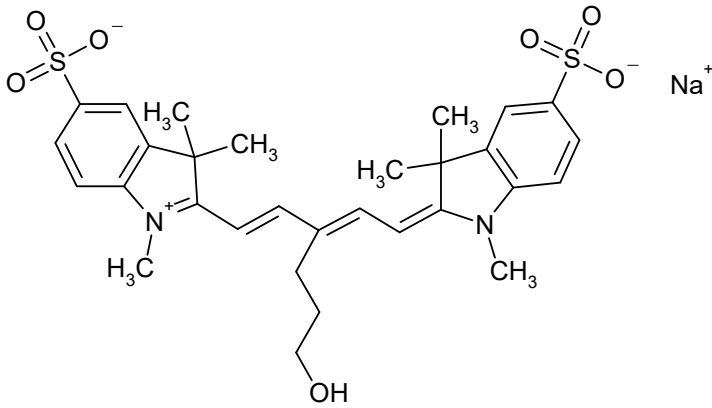
677 nm

C₃₃H₃₉N₂NaO₈S₂

678.8052



S1406



Absorption

Ethanol

646 nm 231000 M⁻¹ cm⁻¹

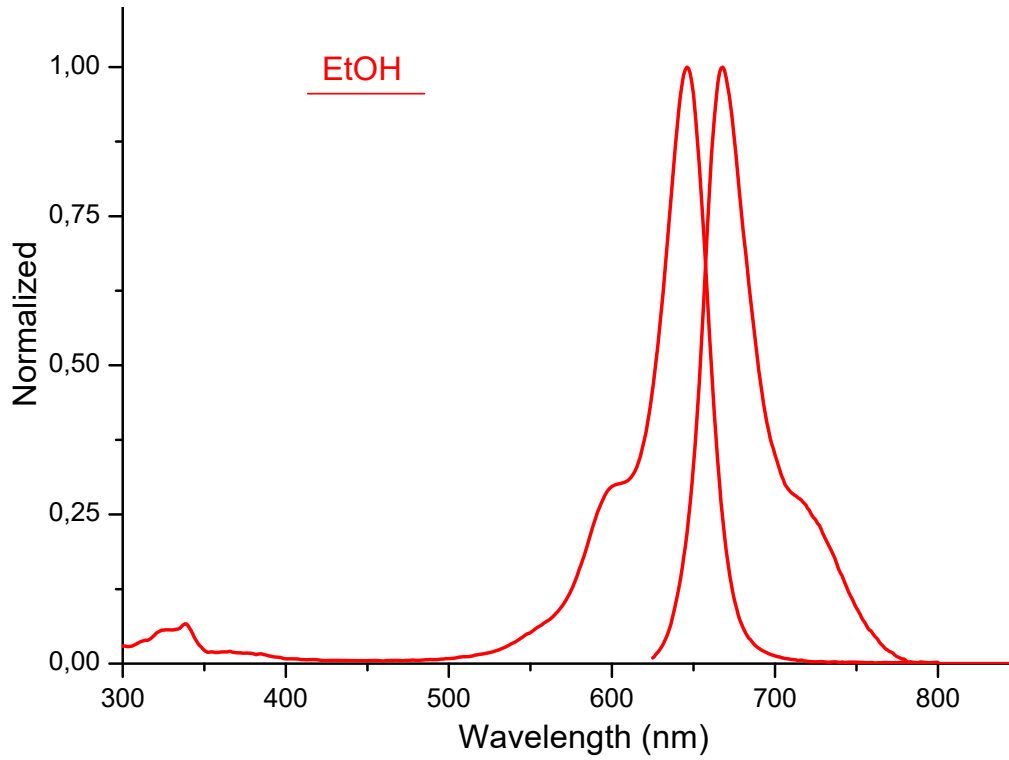
Emission

Ethanol

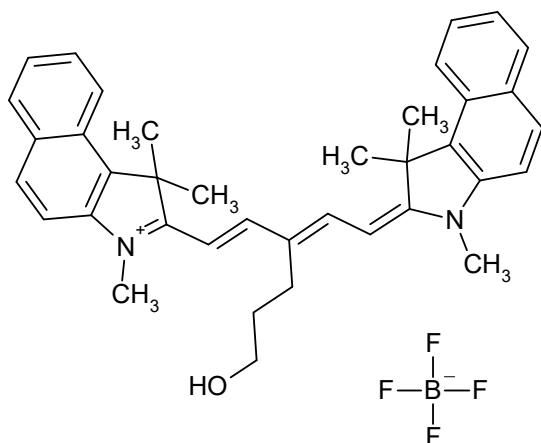
668 nm

C₃₀H₃₅N₂NaO₇S₂

622.7405



S3990



Absorption

Ethanol

675 nm 210000 M⁻¹ cm⁻¹

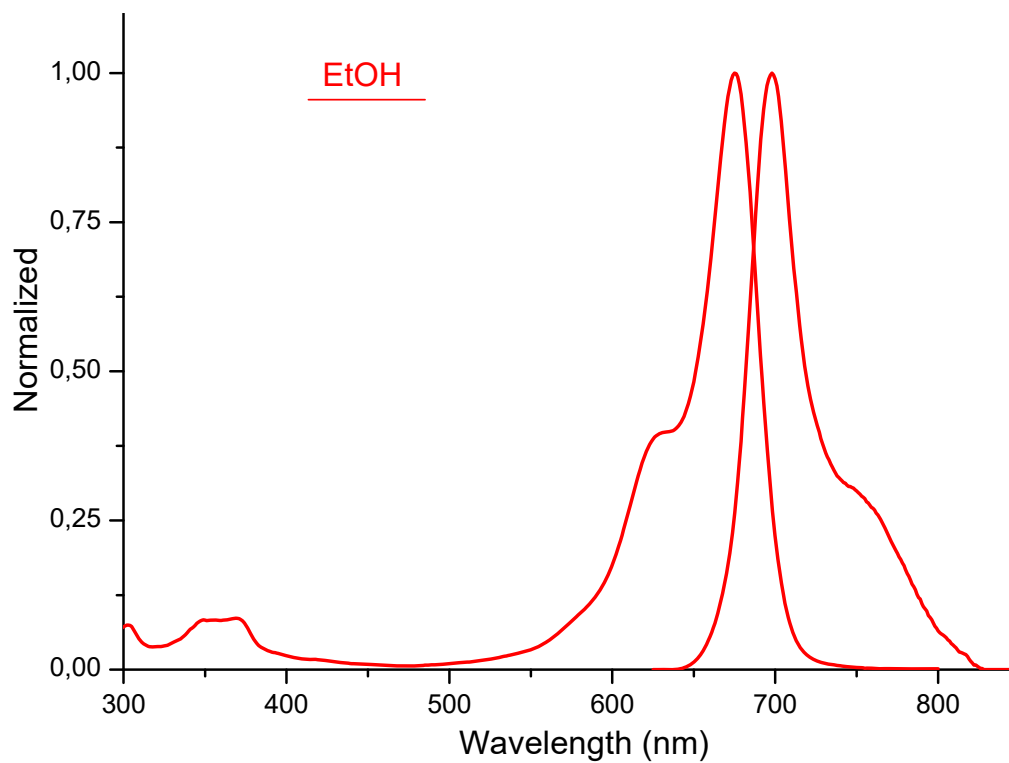
Emission

Ethanol

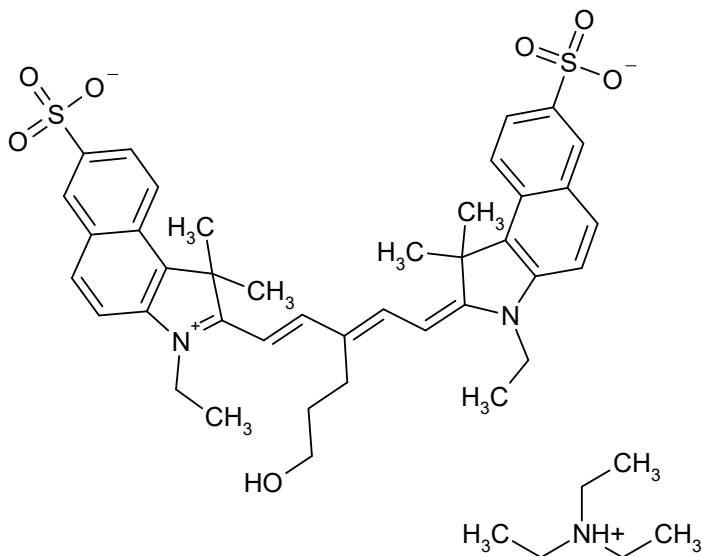
698 nm

C₃₈H₄₁BF₄N₂O

628.5679



S3991



Absorption

Ethanol

681 nm 266000 M⁻¹ cm⁻¹

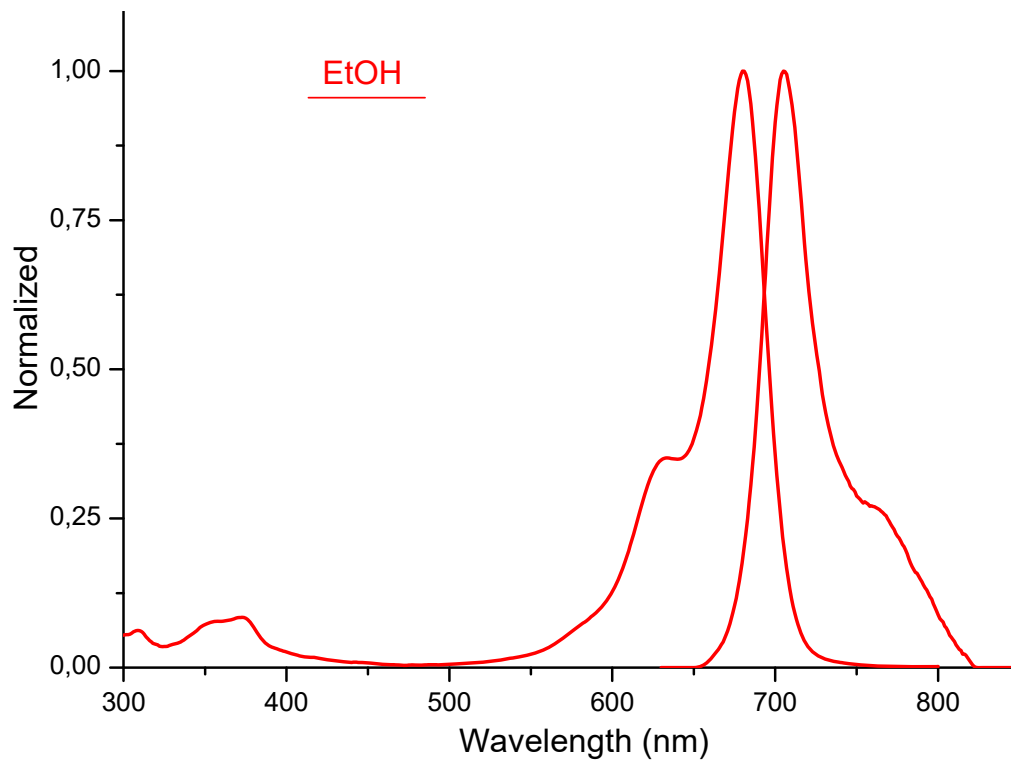
Emission

Ethanol

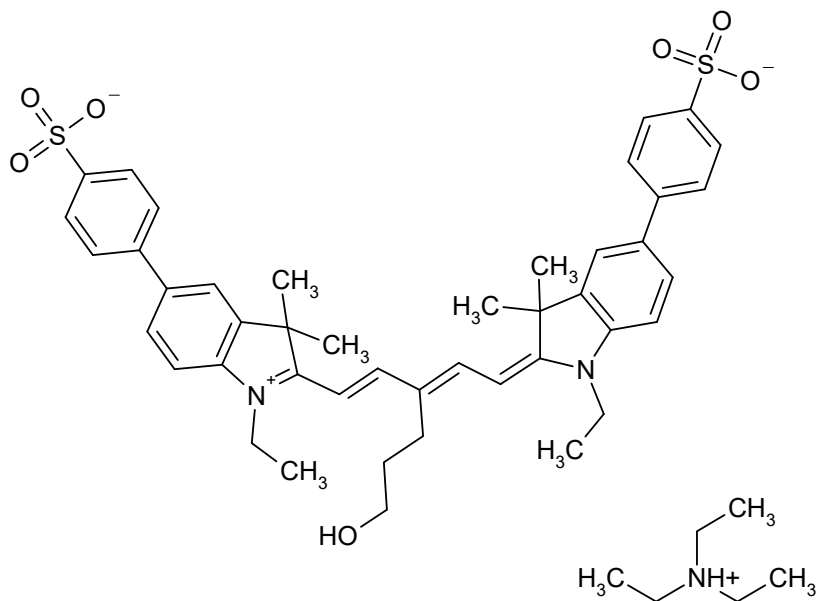
705 nm

C₄₇H₅₉N₂O₇S₂

828.1315



S3992



Absorption

Ethanol

668 nm 237000 M⁻¹ cm⁻¹

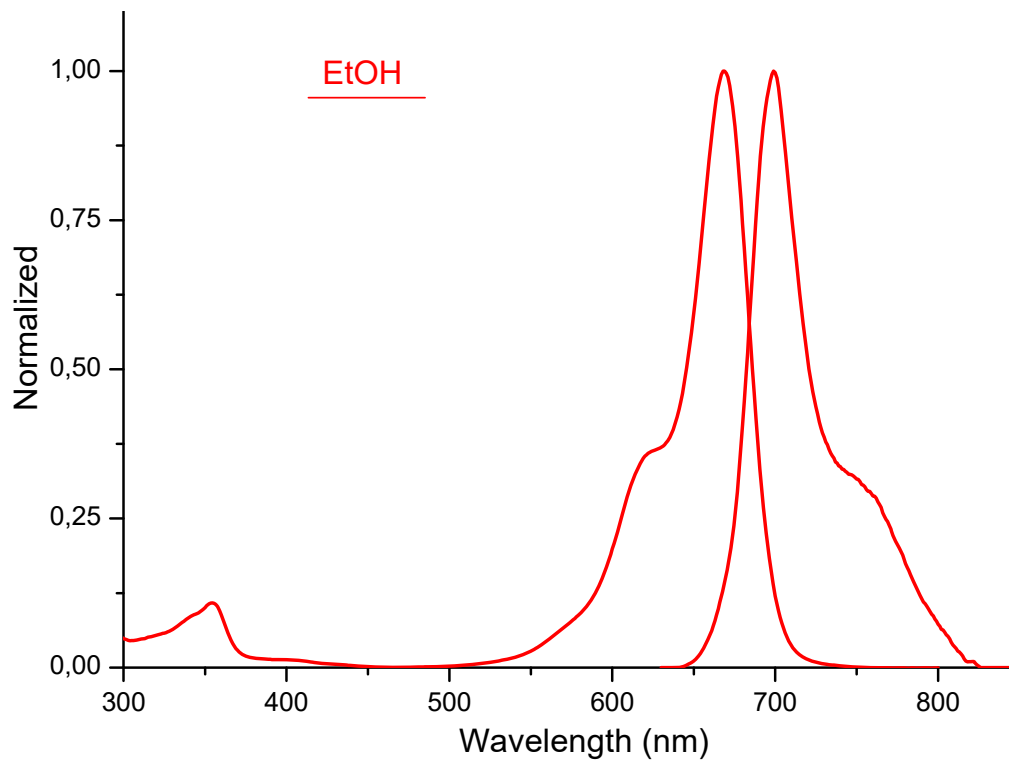
Emission

Ethanol

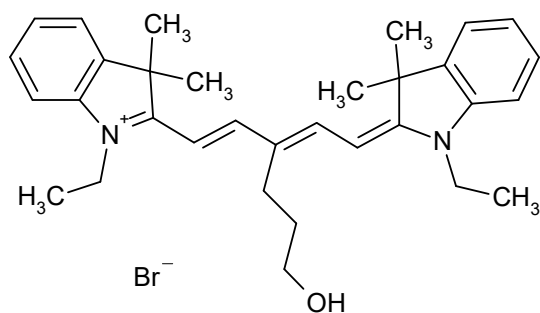
699 nm

C₅₁H₆₃N₂O₇S₂

880.2080



S3993



Absorption

Ethanol

640 nm 232000 M⁻¹ cm⁻¹

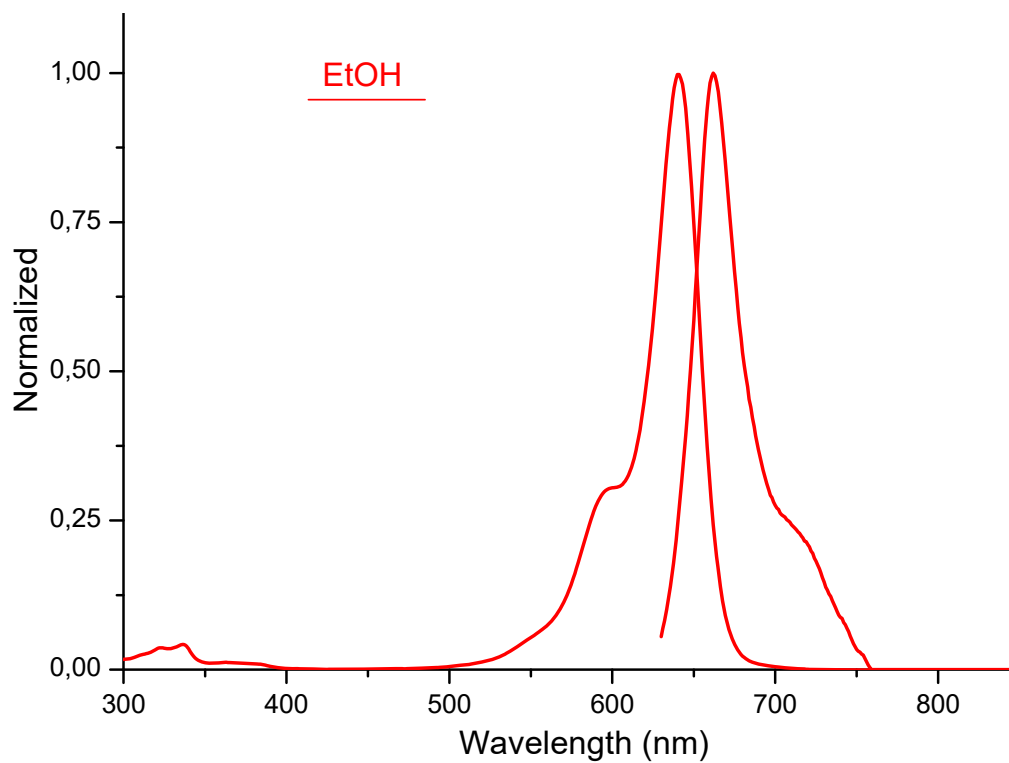
Emission

Ethanol

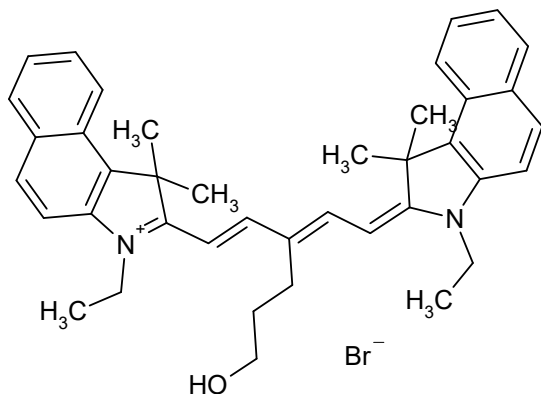
662 nm

C₃₂H₄₁BrN₂O

549.6004



S3994



Absorption

Ethanol

677 nm 214500 M⁻¹ cm⁻¹

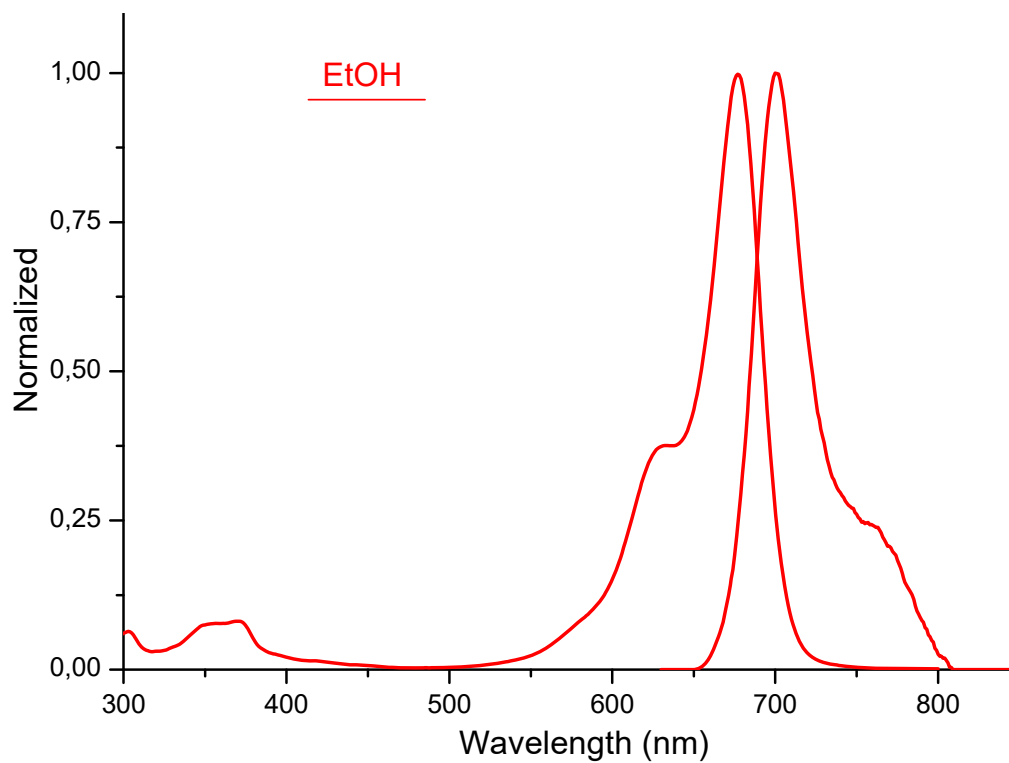
Emission

Ethanol

700 nm

C₄₀H₄₅BrN₂O

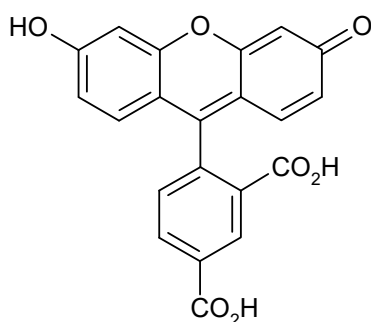
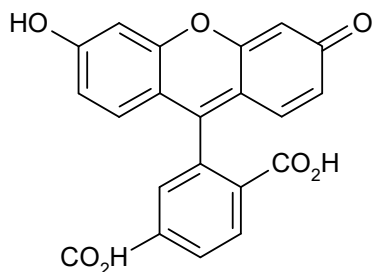
649.7215



S3985

76823-03-5

5(6)-Carboxyfluorescein



Absorption

0.1M Tris water buffer

492 nm 80000 M-1 cm-1

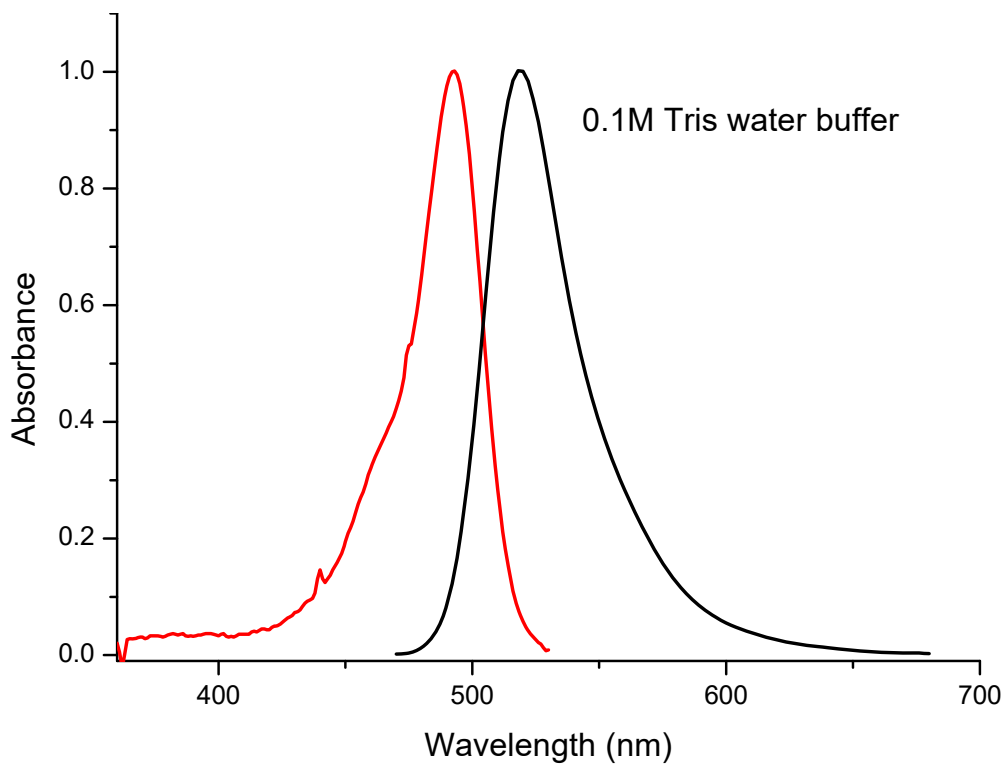
Emission

0.1M Tris water buffer

519 nm

$C_{42}H_{24}O_{14}$

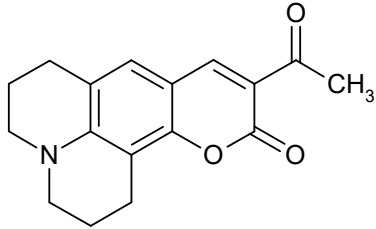
752.6512



S0244

55804-67-6

Coumarin 334



Absorption

Methanol

453 nm 48000 M-1 cm-1

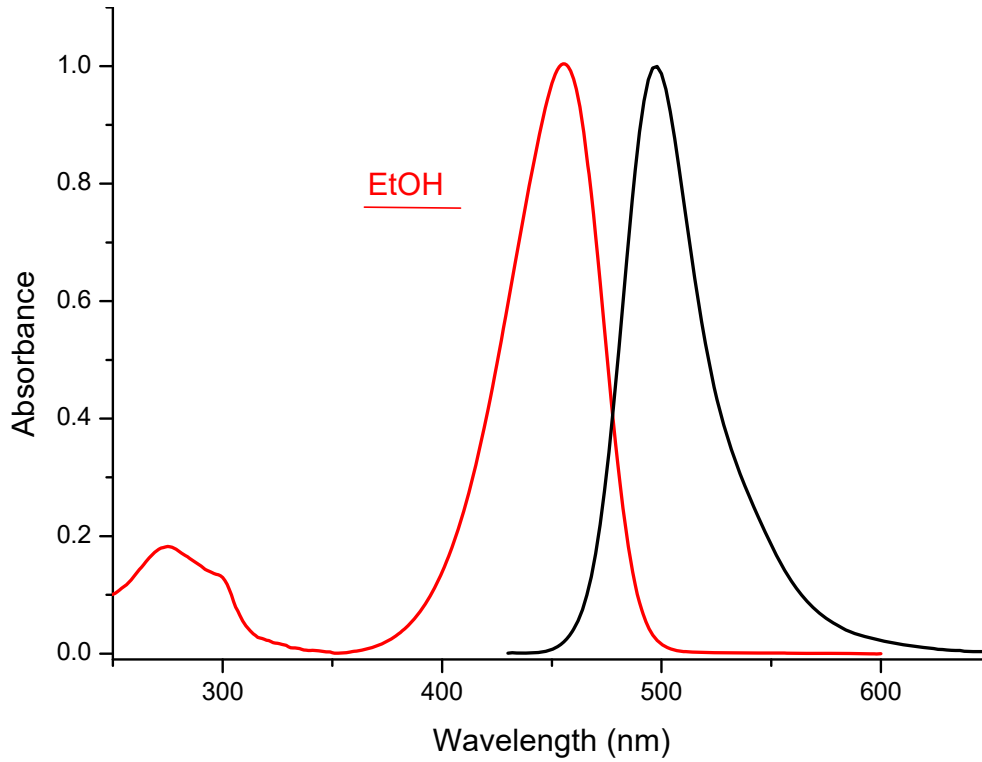
Emission

Ethanol

497 nm

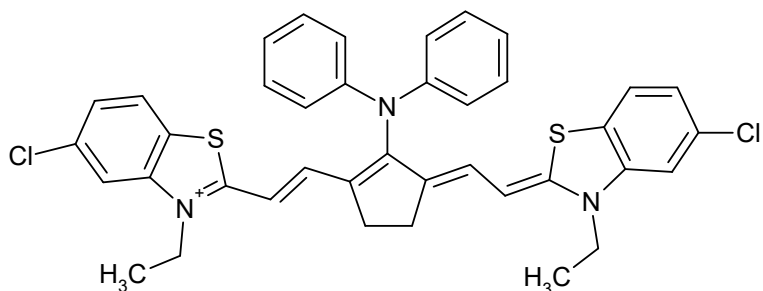
$C_{17}H_{17}NO_3$

283.3299



S4003

IR 140 Tosylate



Absorption

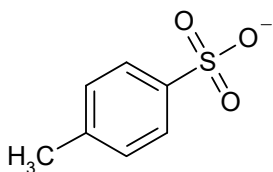
DMSO

827 nm 160000 M⁻¹ cm⁻¹

Emission

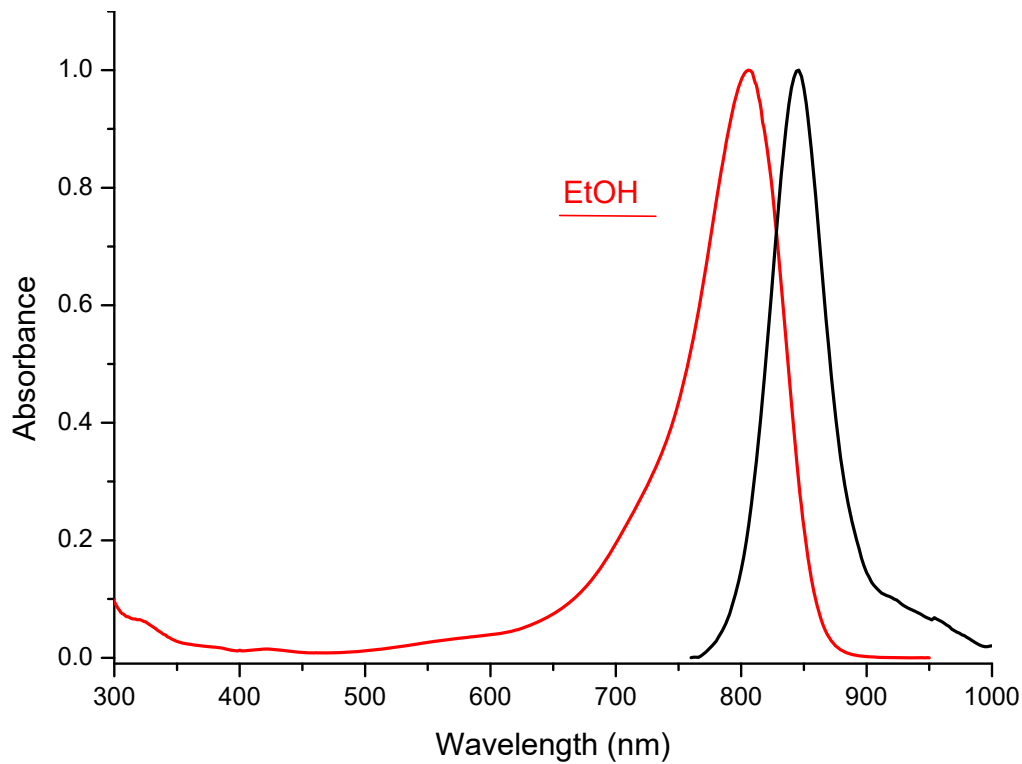
Ethanol

845 nm



C₄₆H₄₁Cl₂N₃O₃S₃

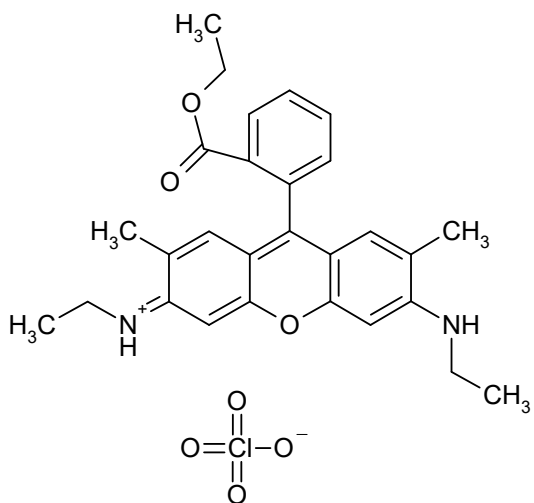
850.9560



S0238

13161-28-9

Rhodamine 6G Perchlorate



Absorption

Methanol

528 nm 108000 M⁻¹ cm⁻¹

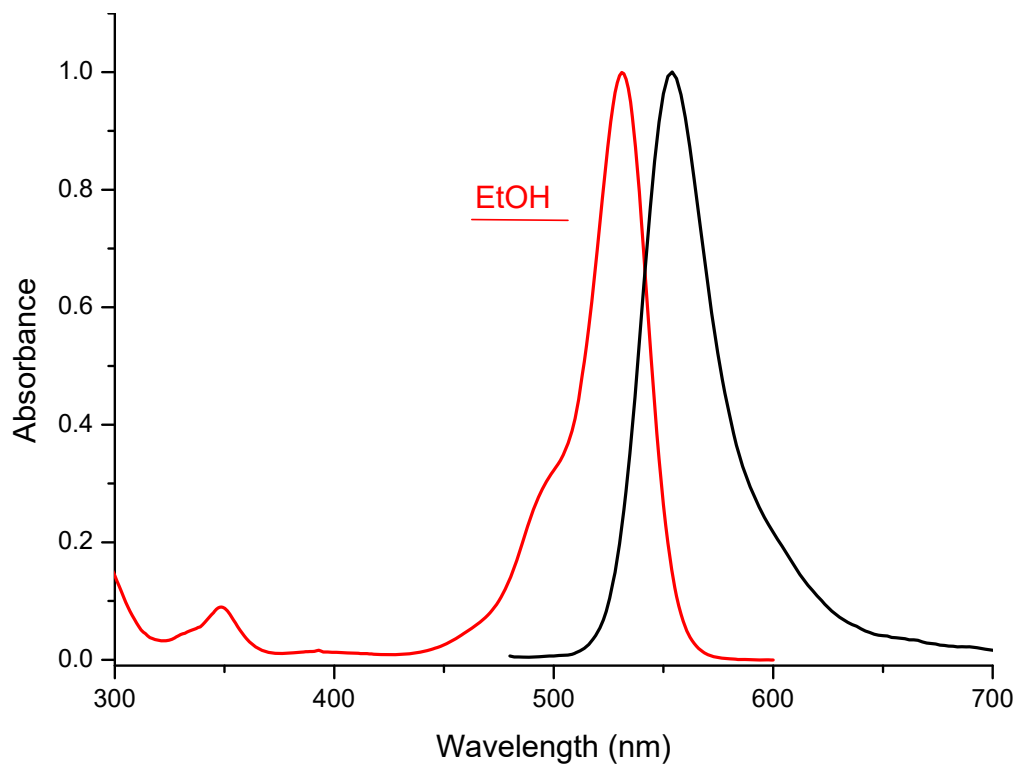
Emission

Ethanol

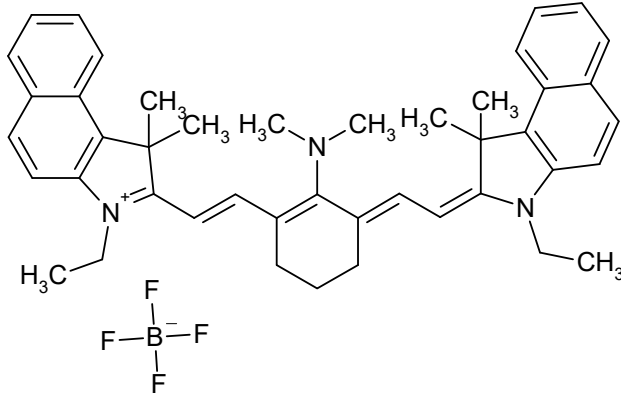
554 nm

C₂₈H₃₁ClN₂O₇

543.0215



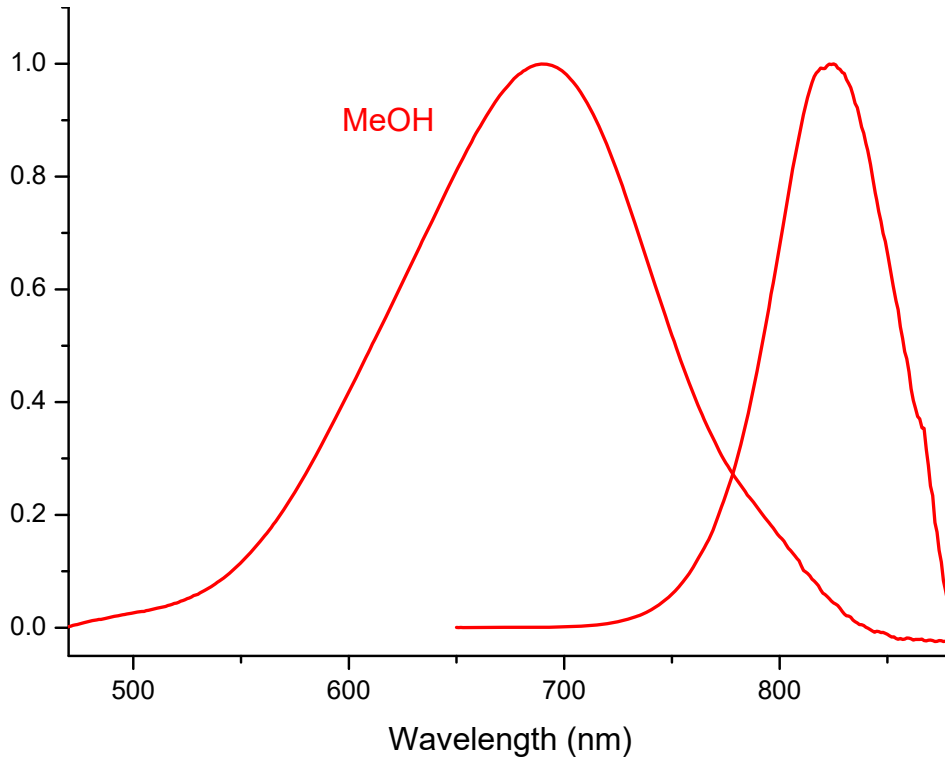
S4161



<i>Absorption</i>	Methanol	
690 nm	92000	M-1 cm-1
<hr/>		
<i>Emission</i>	Methanol	
	825 nm	

$C_{44}H_{50}BF_4N_3$

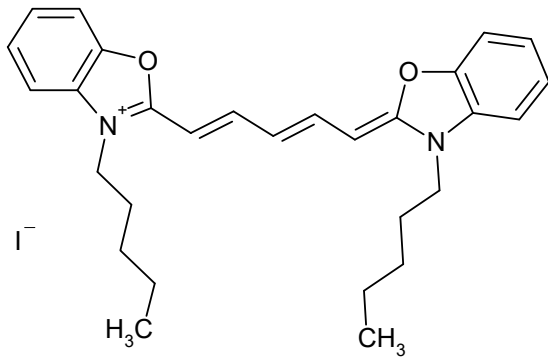
707.7138



S1234

53213-92-6

3,3'-Di-n-pentyloxadicarbocyanine iodide



Absorption

Methanol

582 nm 233000 M-1 cm-1

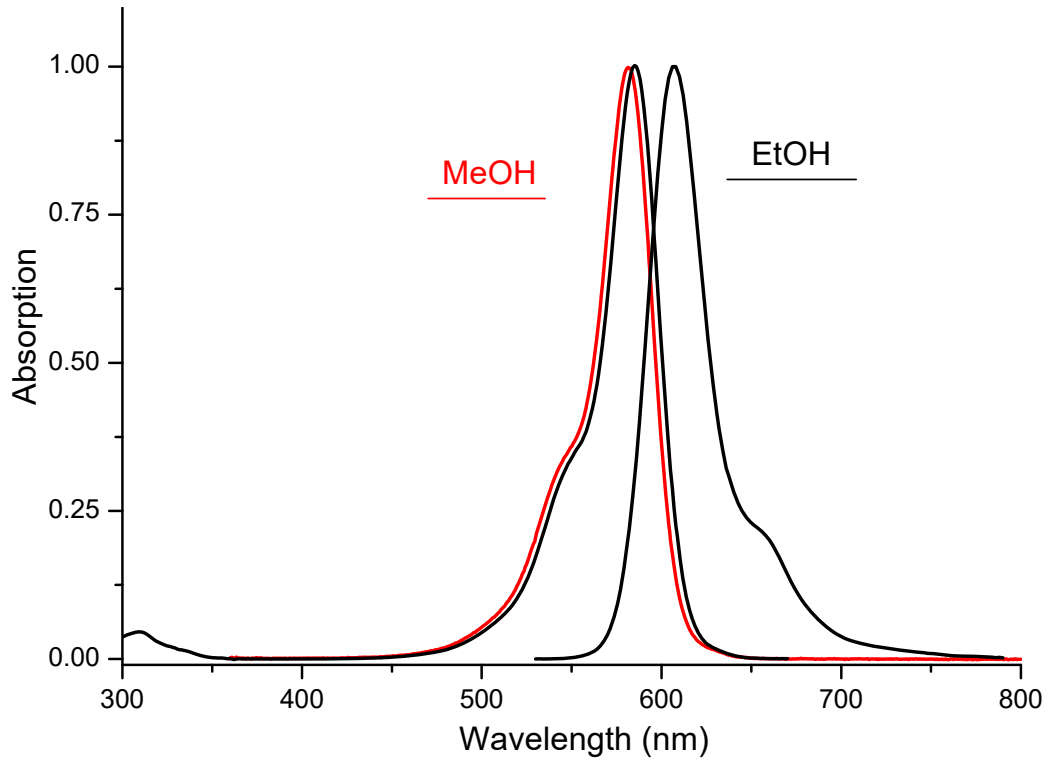
Emission

Ethanol

607 nm

C₂₉H₃₅IN₂O₂

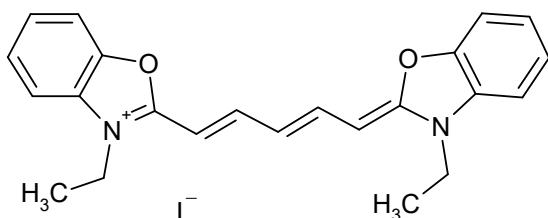
570.5189



S1871

14806-50-9

DODCI



Absorption

Methanol

579 nm 234500 M⁻¹ cm⁻¹

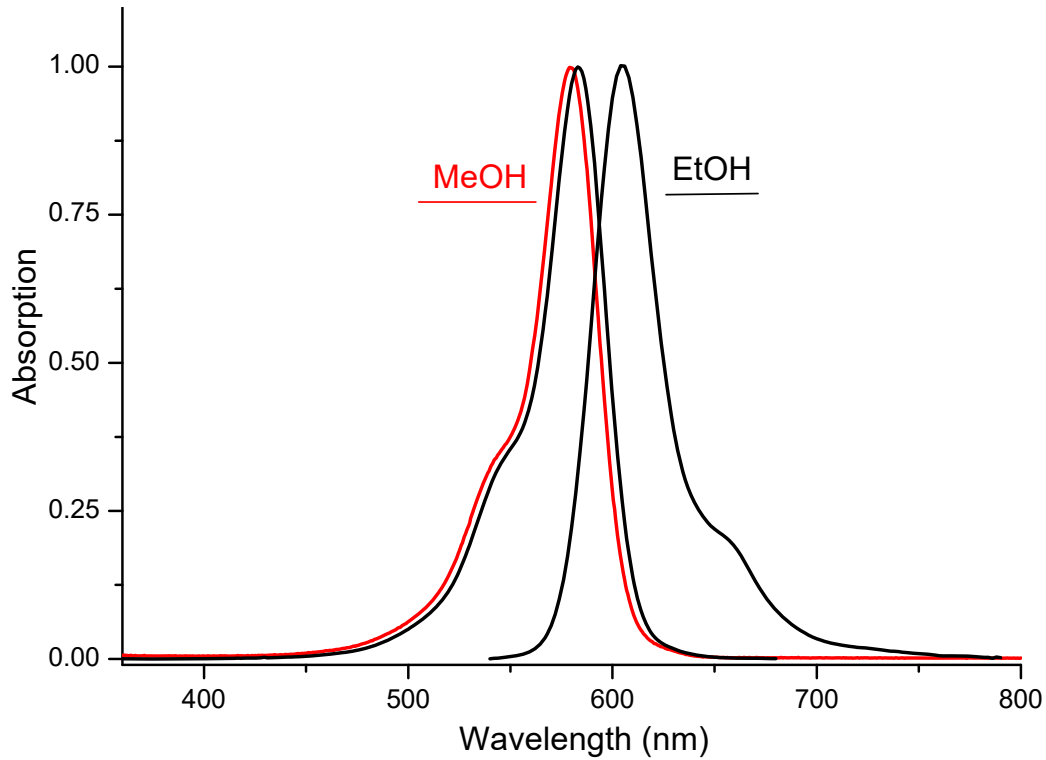
Emission

Ethanol

605 nm

C₂₃H₂₃IN₂O₂

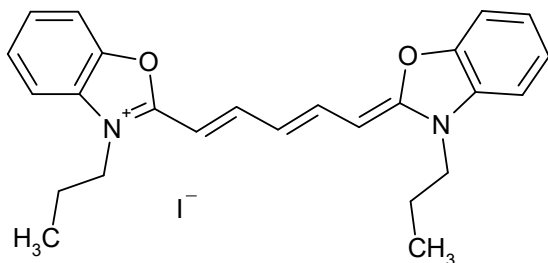
486.3564



S1229

53213-90-4

3,3'-Dipropylloxadicarbocyanine iodide



Absorption

Methanol

582 nm 238000 M⁻¹ cm⁻¹

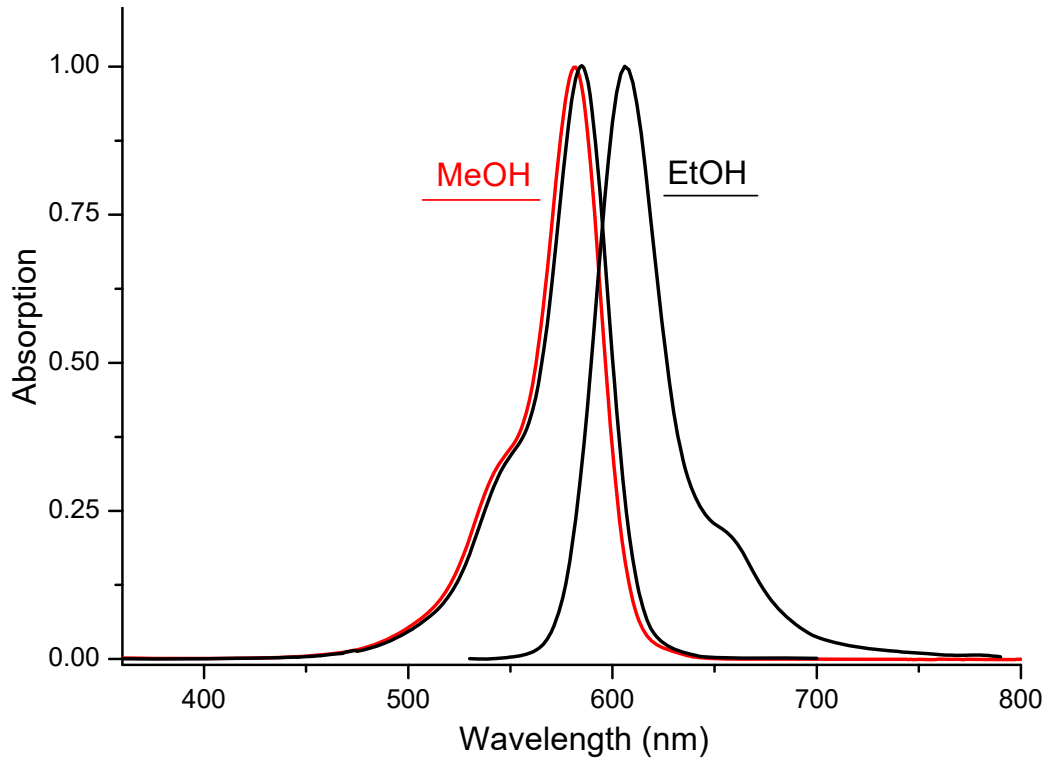
Emission

Ethanol

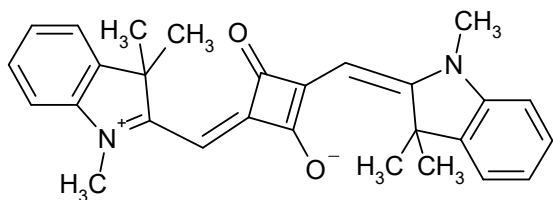
606 nm

C₂₅H₂₇IN₂O₂

514.4105



S4224



Absorption

Ethanol

629 nm 297100 M⁻¹ cm⁻¹

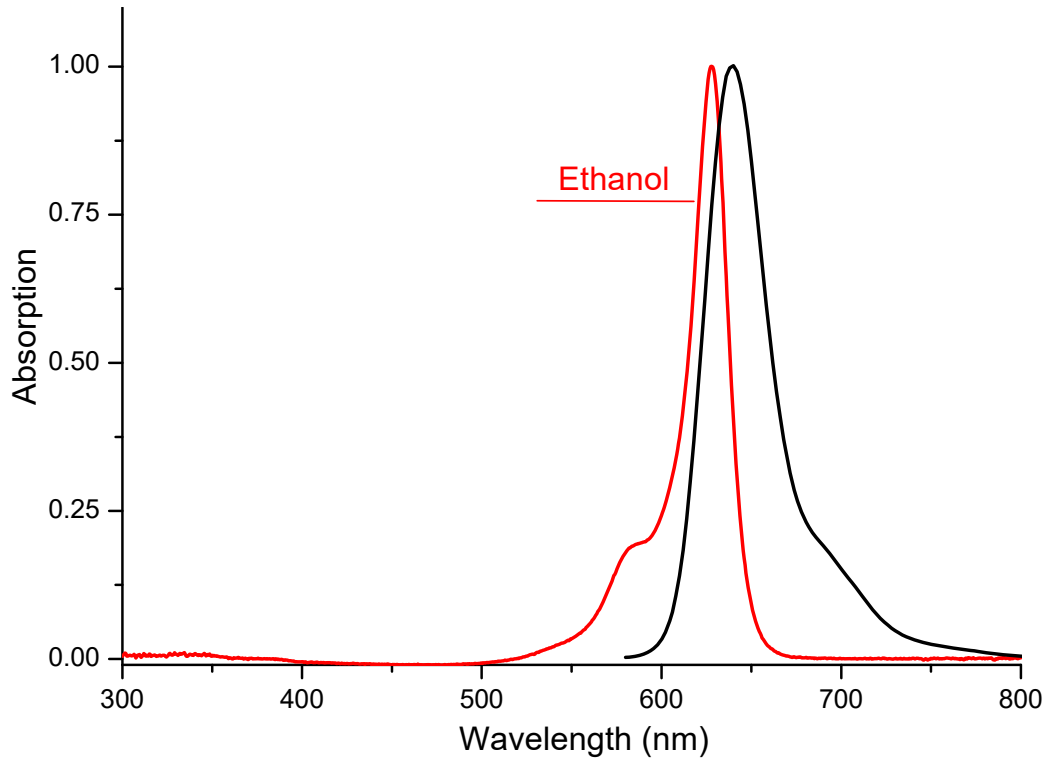
Emission

Ethanol

639 nm

C₂₈H₂₈N₂O₂

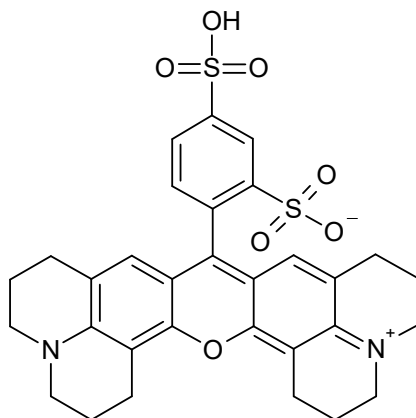
424.5476



S0278

60311-02-6

Sulforhodamine 101



Absorption

Ethanol

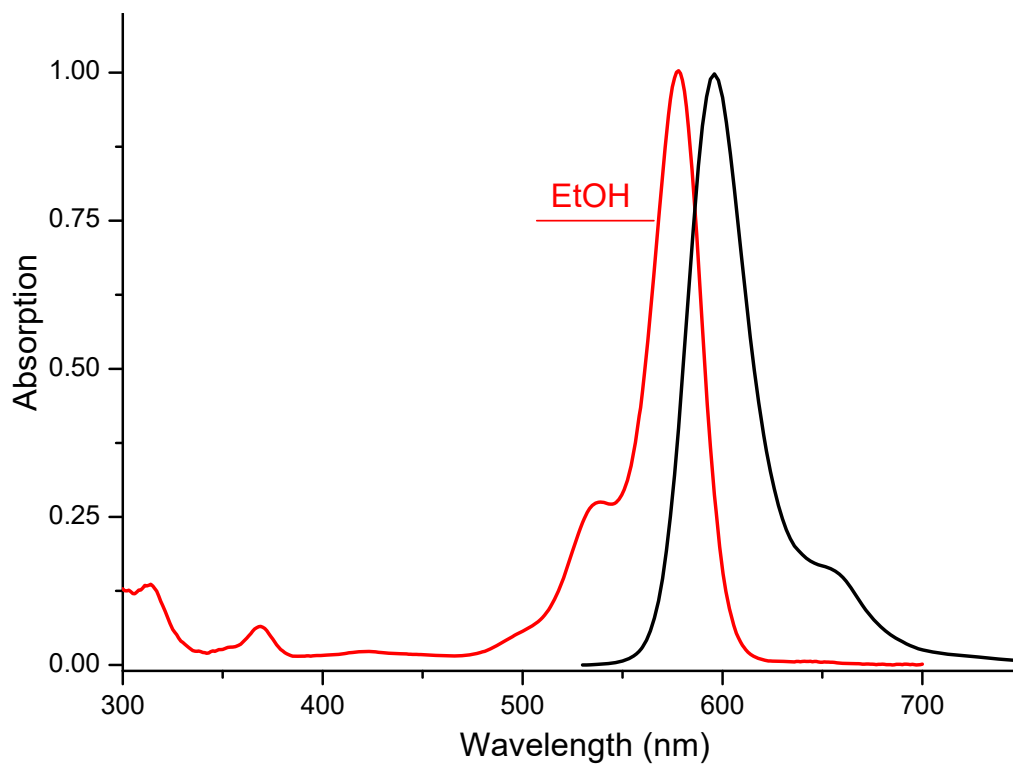
578 nm 111000 M⁻¹ cm⁻¹

Emission

596 nm

C₃₁H₃₀N₂O₇S₂

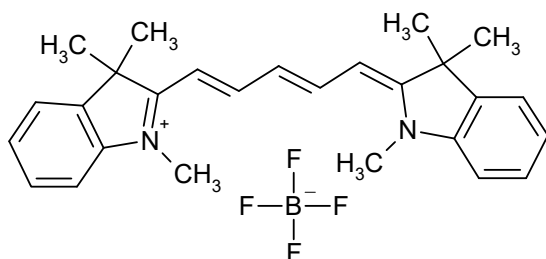
606.7220



D0530

38575-74-5

1,1',3,3,3',3'-Hexamethylindodicarbocyanine
ne tetrafluoroborate



Absorption

Methanol

638 nm 237000 M⁻¹ cm⁻¹

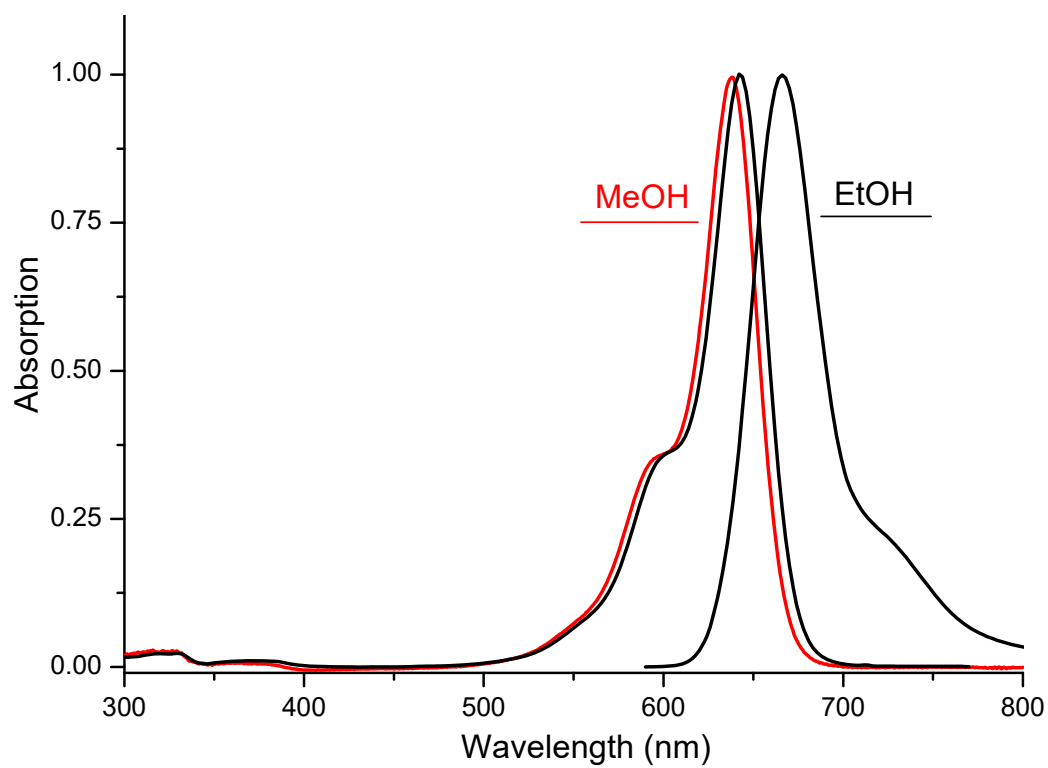
Emission

Ethanol

666 nm

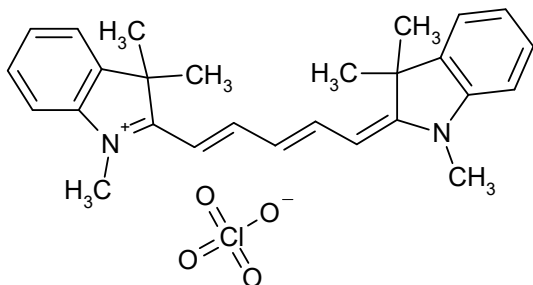
C₂₇H₃₁BF₄N₂

470.3661



S1370

81666-87-7



Absorption

Methanol

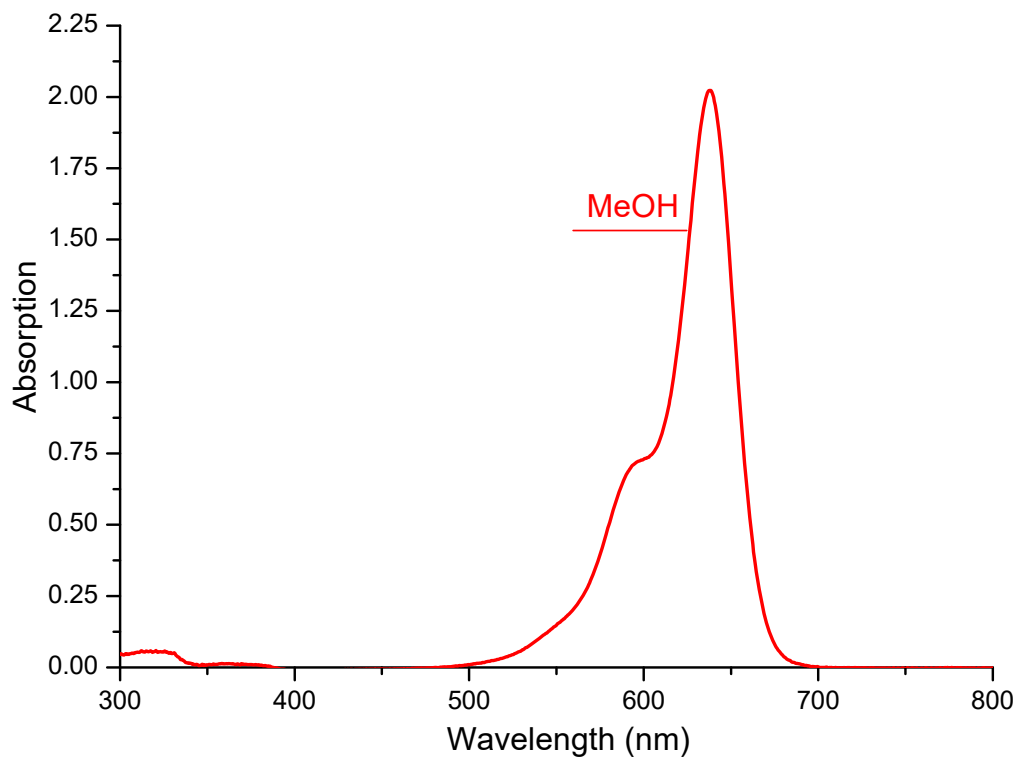
638 nm 237000 M⁻¹ cm⁻¹

Emission

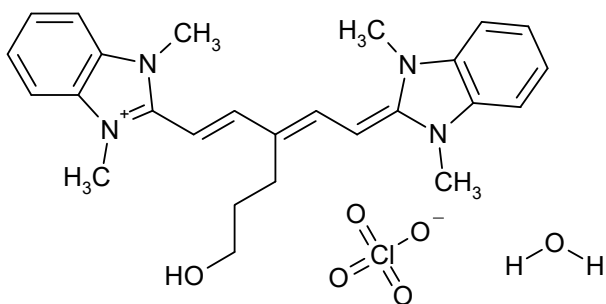
nm

C₂₇H₃₁ClN₂O₄

483.0121



S1148



Absorption

Methanol

578 nm 175000 M⁻¹ cm⁻¹

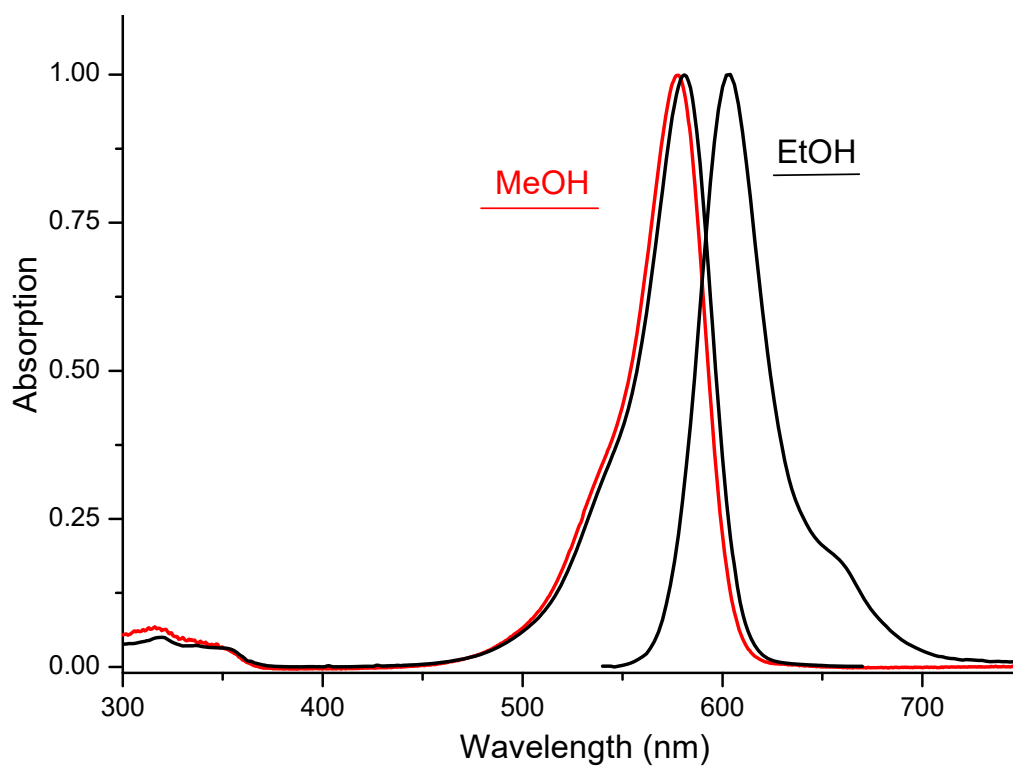
Emission

Ethanol

603 nm

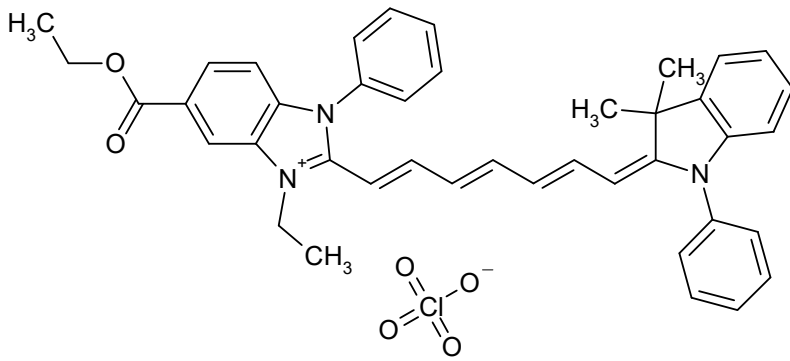
C₂₆H₃₃ClN₄O₆

533.0291



S1247

1260162-30-8



Absorption

Methanol

591 nm 60000 M-1 cm-1

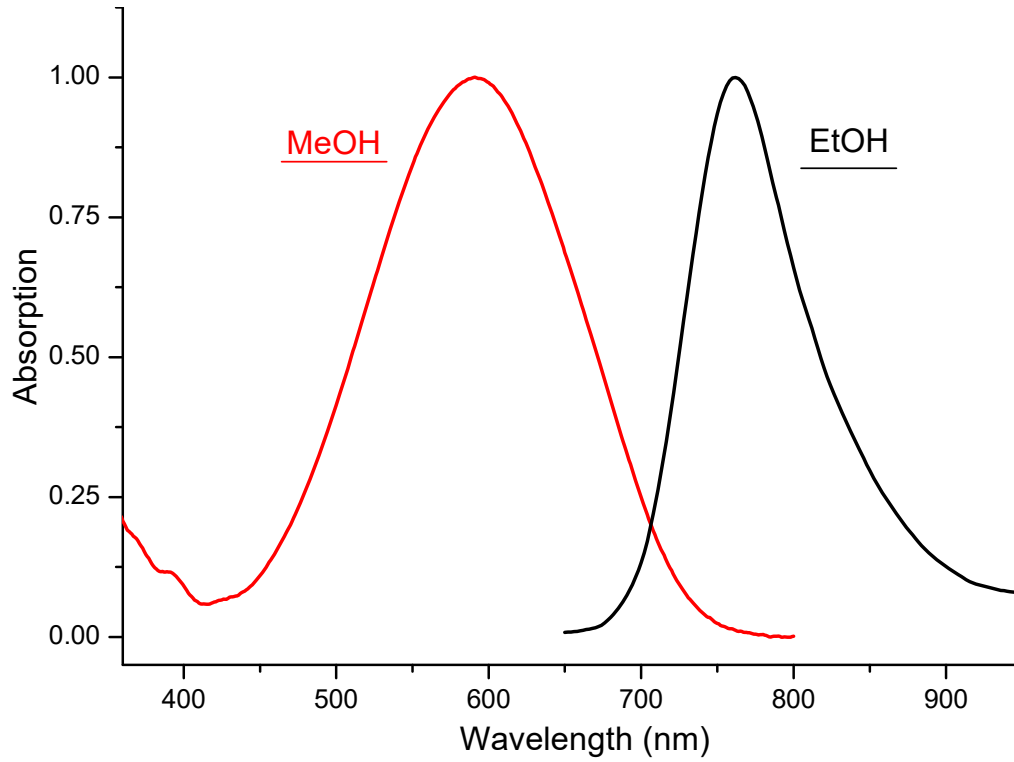
Emission

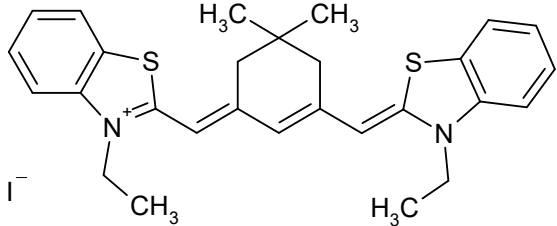
Ethanol

762 nm

$C_{41}H_{40}ClN_3O_6$

706.2454



SN S01170	CAS 20517-94-6	Name	
		M.w. 586.6	Type AgHal-Sensitizer
		C ₂₈ H ₃₁ N ₂ S ₂	
		Absorption	EtOH 653 nm 166000 M-1 cm-1
			nm M-1 cm-1
		Emission	EtOH 673 nm ^{QY}

